



SOFTWARE AS A SERVICE AGREEMENT

This Software as a Service Agreement is made between Tyler Technologies, Inc. and Client.

WHEREAS, Client selected Tyler to provide certain products and services set forth in the Investment Summary, including providing Client with access to Tyler's proprietary software products, and Tyler desires to provide such products and services under the terms of this Agreement;

NOW THEREFORE, in consideration of the foregoing and of the mutual covenants and promises set forth in this Agreement, Tyler and Client agree as follows:

SECTION A – DEFINITIONS

- **"Agreement"** means this Software as a Services Agreement.
- **"Business Travel Policy"** means our business travel policy. A copy of our current Business Travel Policy is attached as Schedule 1 to Exhibit B.
- **"Client"** means Newport-Mesa Unified School District.
- **"Data"** means your data necessary to utilize the Tyler Software.
- **"Data Storage Capacity"** means the contracted amount of storage capacity for your Data identified in the Investment Summary.
- **"Defect"** means a failure of the Tyler Software to substantially conform to the functional descriptions set forth in our written proposal to you, or their functional equivalent. Future functionality may be updated, modified, or otherwise enhanced through our maintenance and support services, and the governing functional descriptions for such future functionality will be set forth in our then-current Documentation.
- **"Defined Users"** means the number of users that are authorized to use the SaaS Services. The Defined Users for the Agreement are as identified in the Investment Summary.
- **"Defined Vehicles"** means the number of vehicles identified in the Investment Summary for which Client is authorized to use the Tyler Software for routing, avl, field trips and other related K12 transportation activities.
- **"White Fleet Vehicles"** means the number of vehicles which are not used for routing, avl, field trips or other related K12 transportation activities for which Client is authorized to use the Tyler Software and is calculated by subtracting fifty percent (50%) from number of the Defined Vehicles. White Fleet Vehicles have reduced functionality and use the Tyler Software.
- **"Developer"** means a third party who owns the intellectual property rights to Third Party Software.
- **"Documentation"** means any online or written documentation related to the use or functionality of the Tyler Software that we provide or otherwise make available to you, including instructions, user guides, manuals and other training or self-help documentation.
- **"Effective Date"** means the date by which both your and our authorized representatives have signed the Agreement.
- **"Force Majeure"** means an event beyond the reasonable control of you or us, including, without



limitation, governmental action, war, riot or civil commotion, fire, natural disaster, or any other cause that could not with reasonable diligence be foreseen or prevented by you or us.

- **“Investment Summary”** means the agreed upon cost proposal for the products and services attached as Exhibit A.
- **“Invoicing and Payment Policy”** means the invoicing and payment policy. A copy of our current Invoicing and Payment Policy is attached as Exhibit B.
- **“SaaS Fees”** means the fees for the SaaS Services identified in the Investment Summary.
- **“SaaS Services”** means software as a service consisting of system administration, system management, and system monitoring activities that Tyler performs for the Tyler Software, and includes the right to access and use the Tyler Software, receive maintenance and support on the Tyler Software, including Downtime resolution under the terms of the SLA, and Data storage and archiving. SaaS Services do not include support of an operating system or hardware, support outside of our normal business hours, or training, consulting or other professional services.
- **“SLA”** means the service level agreement. A copy of our current SLA is attached hereto as Exhibit C.
- **“Statement of Work”** means the industry standard implementation plan describing how our professional services will be provided to implement the Tyler Software, and outlining your and our roles and responsibilities in connection with that implementation. The Statement of Work is attached as Exhibit E.
- **“Support Call Process”** means the support call process applicable to all of our customers who have licensed the Tyler Software. A copy of our current Support Call Process is attached as Schedule 1 to Exhibit C.
- **“Third Party Hardware”** means the third party hardware, if any, identified in the Investment Summary.
- **“Third Party Products”** means the Third Party Software and Third Party Hardware.
- **“Third Party Services”** means the third party services, if any, identified in the Investment Summary.
- **“Third Party Software”** means the third party software, if any, identified in the Investment Summary.
- **“Third Party Terms”** means, if any, the end user license agreement(s) or similar terms for the Third Party Software, as applicable and attached as Exhibit D.
- **“Transportation Solution Terms”** means the terms, including terms applicable to items or services provided by third parties, applicable to Tyler’s transportation solutions. Copies of current Transportation Solution Terms are included at Exhibit F.
- **“Tyler”** means Tyler Technologies, Inc., a Delaware corporation.
- **“Tyler Software”** means our proprietary software, including any integrations, custom modifications, and/or other related interfaces identified in the Investment Summary and licensed by us to you through this Agreement.
- **“we”, “us”, “our”** and similar terms mean Tyler.
- **“you”** and similar terms mean Client.

SECTION B – SAAS SERVICES

1. Rights Granted. We grant to you the non-exclusive, non-assignable limited right to use the SaaS Services solely for your internal business purposes for the number of Defined Users only. The Tyler Software will be made available to you according to the terms of the SLA. You acknowledge that we have no delivery obligations and we will not ship copies of the Tyler Software as part of the SaaS

Services. You may use the SaaS Services to access updates and enhancements to the Tyler Software, as further described in Section C(9). The foregoing notwithstanding, to the extent we have sold you perpetual licenses for Tyler Software, if and as listed in the Investment Summary, for which you are receiving SaaS Services, your rights to use such Tyler Software are perpetual, subject to the terms and conditions of this Agreement including, without limitation, Section B(4). We will make any such software available to you for download.

2. SaaS Fees. You agree to pay us the SaaS Fees. Those amounts are payable in accordance with our Invoicing and Payment Policy. The SaaS Fees are based on the number of Defined Users and amount of Data Storage Capacity. You may add additional users or additional data storage capacity on the terms set forth in Section H(1). In the event you regularly and/or meaningfully exceed the Defined Users or Data Storage Capacity, we reserve the right to charge you additional fees commensurate with the overage(s).
3. Ownership.
 - 3.1 We retain all ownership and intellectual property rights to the SaaS Services, the Tyler Software, and anything developed by us under this Agreement. You do not acquire under this Agreement any license to use the Tyler Software in excess of the scope and/or duration of the SaaS Services.
 - 3.2 The Documentation is licensed to you and may be used and copied by your employees for internal, non-commercial reference purposes only.
 - 3.3 You retain all ownership and intellectual property rights to the Data. You expressly recognize that except to the extent necessary to carry out our obligations contained in this Agreement, we do not create or endorse any Data used in connection with the SaaS Services.
4. Restrictions. You may not: (a) make the Tyler Software or Documentation resulting from the SaaS Services available in any manner to any third party for use in the third party's business operations; (b) modify, make derivative works of, disassemble, reverse compile, or reverse engineer any part of the SaaS Services; (c) access or use the SaaS Services in order to build or support, and/or assist a third party in building or supporting, products or services competitive to us; or (d) license, sell, rent, lease, transfer, assign, distribute, display, host, outsource, disclose, permit timesharing or service bureau use, or otherwise commercially exploit or make the SaaS Services, Tyler Software, or Documentation available to any third party other than as expressly permitted by this Agreement.
5. Software Warranty. We warrant that the Tyler Software will perform without Defects during the term of this Agreement. If the Tyler Software does not perform as warranted, we will use all reasonable efforts, consistent with industry standards, to cure the Defect in accordance with the maintenance and support process set forth in Section C(9), below, the SLA and our then current Support Call Process.
6. SaaS Services.
 - 6.1 Our SaaS Services are audited at least yearly in accordance with the AICPA's Statement on Standards for Attestation Engagements ("SSAE") No. 18. We have attained, and will maintain, SOC 1 and SOC 2 compliance, or its equivalent, for so long as you are timely paying for SaaS Services. Upon execution of a mutually agreeable Non-Disclosure Agreement ("NDA"), we will

provide you with a summary of our compliance report(s) or its equivalent. Every year thereafter, for so long as the NDA is in effect and in which you make a written request, we will provide that same information.

- 6.2 You will be hosted on shared hardware in a Tyler data center or in a third-party data center. In either event, databases containing your Data will be dedicated to you and inaccessible to our other customers.
- 6.3 Our Tyler data centers have fully-redundant telecommunications access, electrical power, and the required hardware to provide access to the Tyler Software in the event of a disaster or component failure. In the event any of your Data has been lost or damaged due to an act or omission of Tyler or its subcontractors or due to a defect in Tyler's software, we will use best commercial efforts to restore all the Data on servers in accordance with the architectural design's capabilities and with the goal of minimizing any Data loss as greatly as possible. In no case shall the recovery point objective ("RPO") exceed a maximum of twenty-four (24) hours from declaration of disaster. For purposes of this subsection, RPO represents the maximum tolerable period during which your Data may be lost, measured in relation to a disaster we declare, said declaration will not be unreasonably withheld.
- 6.4 In the event we declare a disaster, our Recovery Time Objective ("RTO") is twenty-four (24) hours. For purposes of this subsection, RTO represents the amount of time, after we declare a disaster, within which your access to the Tyler Software must be restored.
- 6.5 We conduct annual penetration testing of either the production network and/or web application to be performed. We will maintain industry standard intrusion detection and prevention systems to monitor malicious activity in the network and to log and block any such activity. We will provide you with a written or electronic record of the actions taken by us in the event that any unauthorized access to your database(s) is detected as a result of our security protocols. We will undertake an additional security audit, on terms and timing to be mutually agreed to by the parties, at your written request. You may not attempt to bypass or subvert security restrictions in the SaaS Services or environments related to the Tyler Software. Unauthorized attempts to access files, passwords or other confidential information, and unauthorized vulnerability and penetration test scanning of our network and systems (hosted or otherwise) is prohibited without the prior written approval of our IT Security Officer.
- 6.6 We test our disaster recovery plan on an annual basis. Our standard test is not client-specific. Should you request a client-specific disaster recovery test, we will work with you to schedule and execute such a test on a mutually agreeable schedule. At your written request, we will provide test results to you within a commercially reasonable timeframe after receipt of the request.
- 6.7 We will be responsible for importing back-up and verifying that you can log-in. You will be responsible for running reports and testing critical processes to verify the returned Data.
- 6.8 We provide secure Data transmission paths between each of your workstations and our servers.
- 6.9 Tyler data centers are accessible only by authorized personnel with a unique key entry. All other visitors to Tyler data centers must be signed in and accompanied by authorized personnel.

Entry attempts to the data center are regularly audited by internal staff and external auditors to ensure no unauthorized access.

6.10 Where applicable with respect to our applications that take or process card payment data, we are responsible for the security of cardholder data that we possess, including functions relating to storing, processing, and transmitting of the cardholder data and affirm that, as of the Effective Date, we comply with applicable requirements to be considered PCI DSS compliant and have performed the necessary steps to validate compliance with the PCI DSS. We agree to supply the current status of our PCI DSS compliance program in the form of an official Attestation of Compliance, which can be found at <https://www.tylertech.com/about-us/compliance>, and in the event of any change in our status, will comply with applicable notice requirements.

SECTION C –PROFESSIONAL SERVICES

1. Professional Services. We will provide you the various implementation-related services itemized in the Investment Summary and described in our industry standard implementation plan/ the Statement of Work. We will finalize that documentation with you upon execution of this Agreement.
2. Professional Services Fees. You agree to pay us the professional services fees in the amounts set forth in the Investment Summary. Those amounts are payable in accordance with our Invoicing and Payment Policy. You acknowledge that the fees stated in the Investment Summary are good-faith estimates of the amount of time and materials required for your implementation. We will bill you the actual fees incurred based on the in-scope services provided to you. Any discrepancies in the total values set forth in the Investment Summary will be resolved by multiplying the applicable hourly rate by the quoted hours.
3. Additional Services. The Investment Summary contains, and the Statement of Work describes, the scope of services and related costs (including programming and/or interface estimates) required for the project based on our understanding of the specifications you supplied. If additional work is required, or if you use or request additional services, we will provide you with an addendum or change order, as applicable, outlining the costs for the additional work. The price quotes in the addendum or change order will be valid for thirty (30) days from the date of the quote.
4. Cancellation. If travel is required, we will make all reasonable efforts to schedule travel for our personnel, including arranging travel reservations, at least two (2) weeks in advance of commitments. Therefore, if you cancel services less than two (2) weeks in advance (other than for Force Majeure or breach by us), you will be liable for all (a) non-refundable expenses incurred by us on your behalf, and (b) daily fees associated with cancelled professional services if we are unable to reassign our personnel. We will make all reasonable efforts to reassign personnel in the event you cancel within two (2) weeks of scheduled commitments.
5. Services Warranty. We will perform the services in a professional, workmanlike manner, consistent with industry standards. In the event we provide services that do not conform to this warranty, we will re-perform such services at no additional cost to you.
6. Site Access and Requirements. At no cost to us, you agree to provide us with full and free access to your personnel, facilities, and equipment as may be reasonably necessary for us to provide

implementation services, subject to any reasonable security protocols or other written policies provided to us as of the Effective Date, and thereafter as mutually agreed to by you and us.

7. Background Checks. For at least the past twelve (12) years, all of our employees have undergone criminal background checks prior to hire. All employees sign our confidentiality agreement and security policies.
8. Client Assistance. You acknowledge that the implementation of the Tyler Software is a cooperative process requiring the time and resources of your personnel. You agree to use all reasonable efforts to cooperate with and assist us as may be reasonably required to meet the agreed upon project deadlines and other milestones for implementation. This cooperation includes at least working with us to schedule the implementation-related services outlined in this Agreement. We will not be liable for failure to meet any deadlines and milestones when such failure is due to Force Majeure or to the failure by your personnel to provide such cooperation and assistance (either through action or omission).
9. Maintenance and Support. For so long as you timely pay your SaaS Fees according to the Invoicing and Payment Policy, then in addition to the terms set forth in the SLA and the Support Call Process, we will:
 - 9.1 perform our maintenance and support obligations in a professional, good, and workmanlike manner, consistent with industry standards, to resolve Defects in the Tyler Software (subject to any applicable release life cycle policy);
 - 9.2 provide support during our established support hours;
 - 9.3 maintain personnel that are sufficiently trained to be familiar with the Tyler Software and Third Party Software, if any, in order to provide maintenance and support services;
 - 9.4 make available to you all releases to the Tyler Software (including updates and enhancements) that we make generally available without additional charge to customers who have a maintenance and support agreement in effect; and
 - 9.5 provide non-Defect resolution support of prior releases of the Tyler Software in accordance with any applicable release life cycle policy.

We will use all reasonable efforts to perform support services remotely. Currently, we use a third-party secure unattended connectivity tool called Bomgar, as well as GotoAssist by Citrix. Therefore, you agree to maintain a high-speed internet connection capable of connecting us to your PCs and server(s). You agree to provide us with a login account and local administrative privileges as we may reasonably require to perform remote services. We will, at our option, use the secure connection to assist with proper diagnosis and resolution, subject to any reasonably applicable security protocols. If we cannot resolve a support issue remotely, we may be required to provide onsite services. In such event, we will be responsible for our travel expenses, unless it is determined that the reason onsite support was required was a reason outside our control. Either way, you agree to provide us with full and free access to the Tyler Software, working space, adequate facilities within a reasonable distance from the equipment, and use of machines, attachments, features, or other equipment reasonably necessary for us to provide the maintenance and support services, all at no charge to us. We strongly recommend

that you also maintain your VPN for backup connectivity purposes.

For the avoidance of doubt, SaaS Fees do not include the following services: (a) onsite support (unless Tyler cannot remotely correct a Defect in the Tyler Software, as set forth above); (b) application design; (c) other consulting services; or (d) support outside our normal business hours as listed in our then-current Support Call Process. Requested services such as those outlined in this section will be billed to you on a time and materials basis at our then current rates. You must request those services with at least one (1) weeks' advance notice.

10. Expiration of Services. Training services for which payment has been made that are not used prior to twenty-four (24) months from the Effective Date of the Agreement shall expire without refund or credit of fees paid to Client.

SECTION D – THIRD PARTY PRODUCTS

1. Third Party Hardware. We will sell, deliver, and install onsite the Third Party Hardware, if you have purchased any, for the price set forth in the Investment Summary. Those amounts are payable in accordance with our Invoicing and Payment Policy.
2. Third Party Software. As part of the SaaS Services, you will receive access to the Third Party Software and related documentation for internal business purposes only. Your rights to the Third Party Software will be governed by the Third Party Terms.
3. Third Party Products Warranties.
 - 3.1 We are authorized by each Developer to grant access to the Third Party Software.
 - 3.2 The Third Party Hardware will be new and unused, and upon payment in full, you will receive free and clear title to the Third Party Hardware.
 - 3.3 You acknowledge that we are not the manufacturer of the Third Party Products. We do not warrant or guarantee the performance of the Third Party Products. However, we grant and pass through to you any warranty that we may receive from the Developer or supplier of the Third Party Products.
4. Third Party Services. If you have purchased Third Party Services, those services will be provided independent of Tyler by such third-party at the rates set forth in the Investment Summary and in accordance with our Invoicing and Payment Policy.

SECTION E - INVOICING AND PAYMENT; INVOICE DISPUTES

1. Invoicing and Payment. We will invoice you the SaaS Fees and fees for other professional services in the Investment Summary per our Invoicing and Payment Policy, subject to Section E(2).
2. Invoice Disputes. If you believe any delivered software or service does not conform to the warranties in this Agreement, you will provide us with written notice within thirty (30) days of your receipt of the applicable invoice. The written notice must contain reasonable detail of the issues you contend are in dispute so that we can confirm the issue and respond to your notice with either a

justification of the invoice, an adjustment to the invoice, or a proposal addressing the issues presented in your notice. We will work with you as may be necessary to develop an action plan that outlines reasonable steps to be taken by each of us to resolve any issues presented in your notice. You may withhold payment of the amount(s) actually in dispute, and only those amounts, until we complete the action items outlined in the plan. If we are unable to complete the action items outlined in the action plan because of your failure to complete the items agreed to be done by you, then you will remit full payment of the invoice. We reserve the right to suspend delivery of all SaaS Services, including maintenance and support services, if you fail to pay an invoice not disputed as described above within fifteen (15) days of notice of our intent to do so.

SECTION F – TERM AND TERMINATION

1. Term. The initial term of this Agreement is three (3) years from the first day of the first month following connectivity to the software, unless earlier terminated as set forth below. Upon expiration of the initial term, this Agreement will renew automatically for additional one (1) year renewal terms at our then-current SaaS Fees unless terminated in writing by either party at least sixty (60) days prior to the end of the then-current renewal term. The foregoing notwithstanding, the initial term for Tyler Drive SaaS commences upon availability of the applicable SaaS Services. Your right to access or use the Tyler Software and the SaaS Services will terminate at the end of this Agreement.
2. Termination. This Agreement may be terminated as set forth below. In the event of termination, you will pay us for all undisputed fees and expenses related to the software, products, and/or services you have received, or we have incurred or delivered, prior to the effective date of termination. Disputed fees and expenses in all terminations other than your termination for cause must have been submitted as invoice disputes in accordance with Section E(2).
 - 2.1 Failure to Pay SaaS Fees. You acknowledge that continued access to the SaaS Services is contingent upon your timely payment of SaaS Fees. If you fail to timely pay the SaaS Fees, we may discontinue the SaaS Services and deny your access to the Tyler Software. We may also terminate this Agreement if you don't cure such failure to pay within forty-five (45) days of receiving written notice of our intent to terminate.
 - 2.2 For Cause. If you believe we have materially breached this Agreement, you will invoke the Dispute Resolution clause set forth in Section H(3). You may terminate this Agreement for cause in the event we do not cure, or create a mutually agreeable action plan to address, a material breach of this Agreement within the thirty (30) day window set forth in Section H(3).
 - 2.3 Force Majeure. Either party has the right to terminate this Agreement if a Force Majeure event suspends performance of the SaaS Services for a period of forty-five (45) days or more.
 - 2.4 Lack of Appropriations. If you should not appropriate or otherwise make available funds sufficient to utilize the SaaS Services, you may unilaterally terminate this Agreement upon thirty (30) days written notice to us. You will not be entitled to a refund or offset of previously paid, but unused SaaS Fees. You agree not to use termination for lack of appropriations as a substitute for termination for convenience.

SECTION G – INDEMNIFICATION, LIMITATION OF LIABILITY AND INSURANCE

1. Intellectual Property Infringement Indemnification.

- 1.1 We will defend you against any third party claim(s) that the Tyler Software or Documentation infringes that third party's patent, copyright, or trademark, or misappropriates its trade secrets, and will pay the amount of any resulting adverse final judgment (or settlement to which we consent). You must notify us promptly in writing of the claim and give us sole control over its defense or settlement. You agree to provide us with reasonable assistance, cooperation, and information in defending the claim at our expense.
- 1.2 Our obligations under this Section G(1) will not apply to the extent the claim or adverse final judgment is based on your use of the Tyler Software in contradiction of this Agreement, including with non-licensed third parties, or your willful infringement.
- 1.3 If we receive information concerning an infringement or misappropriation claim related to the Tyler Software, we may, at our expense and without obligation to do so, either: (a) procure for you the right to continue its use; (b) modify it to make it non-infringing; or (c) replace it with a functional equivalent, in which case you will stop running the allegedly infringing Tyler Software immediately. Alternatively, we may decide to litigate the claim to judgment, in which case you may continue to use the Tyler Software consistent with the terms of this Agreement.
- 1.4 If an infringement or misappropriation claim is fully litigated and your use of the Tyler Software is enjoined by a court of competent jurisdiction, in addition to paying any adverse final judgment (or settlement to which we consent), we will, at our option, either: (a) procure the right to continue its use; (b) modify it to make it non-infringing; or (c) replace it with a functional equivalent. This section provides your exclusive remedy for third party copyright, patent, or trademark infringement and trade secret misappropriation claims.

2. General Indemnification.

- 2.1 We will indemnify and hold harmless you and your agents, officials, and employees from and against any and all third-party claims, losses, liabilities, damages, costs, and expenses (including reasonable attorney's fees and costs) for (a) personal injury or property damage to the extent caused by our negligence or willful misconduct; or (b) our violation of PCI-DSS requirements or a law applicable to our performance under this Agreement. You must notify us promptly in writing of the claim and give us sole control over its defense or settlement. You agree to provide us with reasonable assistance, cooperation, and information in defending the claim at our expense.
- 2.2 To the extent permitted by applicable law, you will indemnify and hold harmless us and our agents, officials, and employees from and against any and all third-party claims, losses, liabilities, damages, costs, and expenses (including reasonable attorney's fees and costs) for personal injury or property damage to the extent caused by your negligence or willful misconduct; or (b) your violation of a law applicable to your performance under this Agreement. We will notify you promptly in writing of the claim and will give you sole control over its defense or settlement. We agree to provide you with reasonable assistance, cooperation, and information in defending the claim at your expense.

3. DISCLAIMER. EXCEPT FOR THE EXPRESS WARRANTIES PROVIDED IN THIS AGREEMENT AND TO

THE MAXIMUM EXTENT PERMITTED BY APPLICABLE LAW, WE HEREBY DISCLAIM ALL OTHER WARRANTIES AND CONDITIONS, WHETHER EXPRESS, IMPLIED, OR STATUTORY, INCLUDING, BUT NOT LIMITED TO, ANY IMPLIED WARRANTIES, DUTIES, OR CONDITIONS OF MERCHANTABILITY OR FITNESS FOR A PARTICULAR PURPOSE.

4. **LIMITATION OF LIABILITY.** EXCEPT AS OTHERWISE EXPRESSLY SET FORTH IN THIS AGREEMENT, OUR LIABILITY FOR DAMAGES ARISING OUT OF THIS AGREEMENT, WHETHER BASED ON A THEORY OF CONTRACT OR TORT, INCLUDING NEGLIGENCE AND STRICT LIABILITY, SHALL BE LIMITED TO YOUR ACTUAL DIRECT DAMAGES, NOT TO EXCEED (A) DURING THE INITIAL TERM, AS SET FORTH IN SECTION F(1), TOTAL FEES PAID AS OF THE TIME OF THE CLAIM; OR (B) DURING ANY RENEWAL TERM, THE THEN-CURRENT ANNUAL SAAS FEES PAYABLE IN THAT RENEWAL TERM. THE PARTIES ACKNOWLEDGE AND AGREE THAT THE PRICES SET FORTH IN THIS AGREEMENT ARE SET IN RELIANCE UPON THIS LIMITATION OF LIABILITY AND TO THE MAXIMUM EXTENT ALLOWED UNDER APPLICABLE LAW, THE EXCLUSION OF CERTAIN DAMAGES, AND EACH SHALL APPLY REGARDLESS OF THE FAILURE OF AN ESSENTIAL PURPOSE OF ANY REMEDY. THE FOREGOING LIMITATION OF LIABILITY SHALL NOT APPLY TO CLAIMS THAT ARE SUBJECT TO SECTIONS G(1) AND G(2).
5. **EXCLUSION OF CERTAIN DAMAGES.** TO THE MAXIMUM EXTENT PERMITTED BY APPLICABLE LAW, IN NO EVENT SHALL WE BE LIABLE FOR ANY SPECIAL, INCIDENTAL, PUNITIVE, INDIRECT, OR CONSEQUENTIAL DAMAGES WHATSOEVER, EVEN IF WE HAVE BEEN ADVISED OF THE POSSIBILITY OF SUCH DAMAGES.
6. **Insurance.** During the course of performing services under this Agreement, we agree to maintain the following levels of insurance: (a) Commercial General Liability of at least \$1,000,000; (b) Automobile Liability of at least \$1,000,000; (c) Professional Liability of at least \$1,000,000; (d) Workers Compensation complying with applicable statutory requirements; and (e) Excess/Umbrella Liability of at least \$5,000,000. We will add you as an additional insured to our Commercial General Liability and Automobile Liability policies, which will automatically add you as an additional insured to our Excess/Umbrella Liability policy as well. We will provide you with copies of certificates of insurance upon your written request.

SECTION H – GENERAL TERMS AND CONDITIONS

1. **Additional Products and Services.** You may purchase additional products and services at the rates set forth in the Investment Summary for twelve (12) months from the Effective Date by executing a mutually agreed addendum. If no rate is provided in the Investment Summary, or those twelve (12) months have expired, you may purchase additional products and services at our then-current list price, also by executing a mutually agreed addendum. The terms of this Agreement will control any such additional purchase(s), unless otherwise specifically provided in the addendum.
2. **Optional Items.** Pricing for any listed optional products and services in the Investment Summary will be valid for twelve (12) months from the Effective Date.
3. **Dispute Resolution.** You agree to provide us with written notice within thirty (30) days of becoming aware of a dispute. You agree to cooperate with us in trying to reasonably resolve all disputes, including, if requested by either party, appointing a senior representative to meet and engage in good faith negotiations with our appointed senior representative. Senior representatives will convene within thirty (30) days of the written dispute notice, unless otherwise agreed. All meetings

and discussions between senior representatives will be deemed confidential settlement discussions not subject to disclosure under Federal Rule of Evidence 408 or any similar applicable state rule. If we fail to resolve the dispute, then the parties shall participate in non-binding mediation in an effort to resolve the dispute. If the dispute remains unresolved after mediation, then either of us may assert our respective rights and remedies in a court of competent jurisdiction. Nothing in this section shall prevent you or us from seeking necessary injunctive relief during the dispute resolution procedures.

4. Taxes. The fees in the Investment Summary do not include any taxes, including, without limitation, sales, use, or excise tax. If you are a tax-exempt entity, you agree to provide us with a tax-exempt certificate. Otherwise, we will pay all applicable taxes to the proper authorities and you will reimburse us for such taxes. If you have a valid direct-pay permit, you agree to provide us with a copy. For clarity, we are responsible for paying our income taxes, both federal and state, as applicable, arising from our performance of this Agreement.
5. Nondiscrimination. We will not discriminate against any person employed or applying for employment concerning the performance of our responsibilities under this Agreement. This discrimination prohibition will apply to all matters of initial employment, tenure, and terms of employment, or otherwise with respect to any matter directly or indirectly relating to employment concerning race, color, religion, national origin, age, sex, sexual orientation, ancestry, disability that is unrelated to the individual's ability to perform the duties of a particular job or position, height, weight, marital status, or political affiliation. We will post, where appropriate, all notices related to nondiscrimination as may be required by applicable law.
6. E-Verify. We have complied, and will comply, with the E-Verify procedures administered by the U.S. Citizenship and Immigration Services Verification Division for all of our employees assigned to your project.
7. Subcontractors. We will not subcontract any services under this Agreement without your prior written consent, not to be unreasonably withheld.
8. Binding Effect; No Assignment. This Agreement shall be binding on, and shall be for the benefit of, either your or our successor(s) or permitted assign(s). Neither party may assign this Agreement without the prior written consent of the other party; provided, however, your consent is not required for an assignment by us as a result of a corporate reorganization, merger, acquisition, or purchase of substantially all of our assets.
9. Force Majeure. Except for your payment obligations, neither party will be liable for delays in performing its obligations under this Agreement to the extent that the delay is caused by Force Majeure; provided, however, that within ten (10) business days of the Force Majeure event, the party whose performance is delayed provides the other party with written notice explaining the cause and extent thereof, as well as a request for a reasonable time extension equal to the estimated duration of the Force Majeure event.
10. No Intended Third Party Beneficiaries. This Agreement is entered into solely for the benefit of you and us. No third party will be deemed a beneficiary of this Agreement, and no third party will have the right to make any claim or assert any right under this Agreement. This provision does not affect the rights of third parties under any Third Party Terms.

11. Entire Agreement; Amendment. This Agreement represents the entire agreement between you and us with respect to the subject matter hereof, and supersedes any prior agreements, understandings, and representations, whether written, oral, expressed, implied, or statutory. Purchase orders submitted by you, if any, are for your internal administrative purposes only, and the terms and conditions contained in those purchase orders will have no force or effect. This Agreement may only be modified by a written amendment signed by an authorized representative of each party.
12. Severability. If any term or provision of this Agreement is held invalid or unenforceable, the remainder of this Agreement will be considered valid and enforceable to the fullest extent permitted by law.
13. No Waiver. In the event that the terms and conditions of this Agreement are not strictly enforced by either party, such non-enforcement will not act as or be deemed to act as a waiver or modification of this Agreement, nor will such non-enforcement prevent such party from enforcing each and every term of this Agreement thereafter.
14. Independent Contractor. We are an independent contractor for all purposes under this Agreement.
15. Notices. All notices or communications required or permitted as a part of this Agreement, such as notice of an alleged material breach for a termination for cause or a dispute that must be submitted to dispute resolution, must be in writing and will be deemed delivered upon the earlier of the following: (a) actual receipt by the receiving party; (b) upon receipt by sender of a certified mail, return receipt signed by an employee or agent of the receiving party; (c) upon receipt by sender of proof of email delivery; or (d) if not actually received, five (5) days after deposit with the United States Postal Service authorized mail center with proper postage (certified mail, return receipt requested) affixed and addressed to the other party at the address set forth on the signature page hereto or such other address as the party may have designated by proper notice. The consequences for the failure to receive a notice due to improper notification by the intended receiving party of a change in address will be borne by the intended receiving party.
16. Client Lists. You agree that we may identify you by name in client lists, marketing presentations, and promotional materials.
17. Confidentiality. Both parties recognize that their respective employees and agents, in the course of performance of this Agreement, may be exposed to confidential information and that disclosure of such information could violate rights to private individuals and entities, including the parties. Confidential information is nonpublic information that a reasonable person would believe to be confidential and includes, without limitation, personal identifying information (*e.g.*, social security numbers) and trade secrets, each as defined by applicable state law. Each party agrees that it will not disclose any confidential information of the other party and further agrees to take all reasonable and appropriate action to prevent such disclosure by its employees or agents. The confidentiality covenants contained herein will survive the termination or cancellation of this Agreement. This obligation of confidentiality will not apply to information that:
 - (a) is in the public domain, either at the time of disclosure or afterwards, except by breach of this Agreement by a party or its employees or agents;
 - (b) a party can establish by reasonable proof was in that party's possession at the time of initial disclosure;

- (c) a party receives from a third party who has a right to disclose it to the receiving party; or
(d) is the subject of a legitimate disclosure request under the open records laws or similar applicable public disclosure laws governing this Agreement; provided, however, that in the event you receive an open records or other similar applicable request, you will give us prompt notice and otherwise perform the functions required by applicable law.
18. Business License. In the event a local business license is required for us to perform services hereunder, you will promptly notify us and provide us with the necessary paperwork and/or contact information so that we may timely obtain such license.
19. Governing Law. This Agreement will be governed by and construed in accordance with the laws of your state of domicile, without regard to its rules on conflicts of law.
20. Multiple Originals and Authorized Signatures. This Agreement may be executed in multiple originals, any of which will be independently treated as an original document. Any electronic, faxed, scanned, photocopied, or similarly reproduced signature on this Agreement or any amendment hereto will be deemed an original signature and will be fully enforceable as if an original signature. Each party represents to the other that the signatory set forth below is duly authorized to bind that party to this Agreement.
21. Cooperative Procurement. To the maximum extent permitted by applicable law, we agree that this Agreement may be used as a cooperative procurement vehicle by eligible jurisdictions. We reserve the right to negotiate and customize the terms and conditions set forth herein, including but not limited to pricing, to the scope and circumstances of that cooperative procurement.
22. Contract Documents. This Agreement includes the following exhibits:
- | | |
|-----------|---|
| Exhibit A | Investment Summary |
| Exhibit B | Invoicing and Payment Policy
Schedule 1: Business Travel Policy |
| Exhibit C | Service Level Agreement
Schedule 1: Support Call Process |
| Exhibit D | Third Party Terms |
| Exhibit E | Statement of Work |
| Exhibit F | Transportation Solution Terms
Schedule 1: Additional Tyler Drive Terms & Conditions
Schedule 2: Professional Hardware Installation Terms
Schedule 3: Return Merchandise Authorization Process & Termination of GPS & Tyler Drive Units
Schedule 4: HERE End User Terms
Schedule 5: GeoTab Equipment Warranty |

IN WITNESS WHEREOF, a duly authorized representative of each party has executed this Agreement as of the date(s) set forth below.

Tyler Technologies, Inc.

Newport-Mesa Unified School District

By: _____

By: _____

Name: _____

Name: _____

Title: _____

Title: _____

Date: _____

Date: _____

Address for Notices:

Tyler Technologies, Inc.
One Tyler Drive
Yarmouth, ME 04096
Attention: Chief Legal Officer

Address for Notices:

Newport-Mesa Unified School District
2985 Bear Street
Costa Mesa, CA 92626
Attention: _____



Exhibit A Investment Summary

The following Investment Summary details the software and services to be delivered by us to you under the Agreement. This Investment Summary is effective as of the Effective Date. Capitalized terms not otherwise defined will have the meaning assigned to such terms in the Agreement.

prices are valid until April 6 2022

Software as a Service	Quantity	Price	Extended	Discount	This Year Total	Year 2	Year 3
Traversa Core provided as SaaS for up to 50 vehicles	1	\$4,350.00	\$4,350.00	\$0.00	\$4,350.00	\$4,350.00	\$4,567.50 USD
Traversa Advanced Routing provided as SaaS for up to 50 vehicles	1	\$3,650.00	\$3,650.00	\$0.00	\$3,650.00	\$3,650.00	\$3,832.50 USD
Traversa Advanced Activity Trips provided as SaaS for up to 50 vehicles	1	\$2,450.00	\$2,450.00	\$0.00	\$2,450.00	\$2,450.00	\$2,572.50 USD
Traversa Training Module provided as SaaS for up to 50 vehicles	1	\$2,450.00	\$2,450.00	\$0.00	\$2,450.00	\$2,450.00	\$2,572.50 USD
Traversa Reporting Tool provided as SaaS for up to 50 vehicles	1	inc.	inc.	\$0.00	inc.	inc.	inc. USD
Subtotal: Application Software Maintenance Fees			\$12,900.00	\$0.00	\$12,900.00	\$12,900.00	\$13,545.00 USD
Services	Quantity	Price	Extended	Discount	This Year Total	Year 2	Year 3
Traversa Core Implementation	1	\$9,350.00	\$9,350.00	\$0.00	\$9,350.00		USD
Traversa Core Base Training	1	\$1,760.00	\$1,760.00	\$0.00	\$1,760.00		USD
Orange Map, Source: local GIS	1	inc	\$0.00	inc	inc		USD
Additional Maps: (none are included with this quote)							
Additional training hours which can be used for (1),(2) :	24	\$175.00	\$4,200.00	\$0.00	\$4,200.00		USD
Additional Traversa Core Training							
Traversa Advanced Routing Training							
Traversa Advanced Activity Trips Training							
Traversa Training Module Training							
Project Management (hours) (1),(2)	2	\$175.00	\$350.00	\$0.00	\$350.00		USD
Subtotal: Application Services			\$15,660.00	\$0.00	\$15,660.00	\$0.00	\$0.00 USD
Total One-Time Fees:					\$28,560.00		USD
Total Recurring Fees **: \$12,900.00						\$12,900.00	USD
							\$13,545.00 USD

** Subject to annual increase after Year 3

Annual Maintenance and Support fees, SaaS fees, Hosting fees, and Subscription fees are first payable when Tyler makes the software accessible to the Client (for Maintenance) or on the first day of the month following the date this quotation was signed (for SaaS, Hosting, and Subscription), and any such fees are prorated to align with the applicable term under the agreement, with renewals invoiced annually thereafter in accord with the Agreement.

¹ Travel expenses for trainer and/or project manager to visit the user's site are not included and will be billed at actual costs

² Online Training Classes are limited to 5 persons and are delivered in 2 hour increments. Onsite Training Classes are limited to 5 persons and are delivered in 8 hour increments

Quote prepared on January 06, 2022

Version 38h

Signature





Exhibit B

Invoicing and Payment Policy

We will provide you with the software and services set forth in the Investment Summary of the Agreement. Capitalized terms not otherwise defined will have the meaning assigned to such terms in the Agreement.

Invoicing: We will invoice you for the applicable software and services in the Investment Summary as set forth below. Your rights to dispute any invoice are set forth in the Agreement.

1. **SaaS Fees.** SaaS Fees are invoiced on an annual basis, beginning on the commencement of the initial term as set forth in Section F (1) of this Agreement. Your annual SaaS fees for the initial term are set forth in the Investment Summary. Upon expiration of the initial term, your annual SaaS fees will be at our then-current rates.
2. **Other Tyler Software and Services.**
 - 2.1 *VPN Device:* The fee for the VPN device will be invoiced upon installation of the VPN.
 - 2.2 *Implementation and Other Professional Services (including training):* Implementation and other professional services (including training) are billed and invoiced as delivered, at the rates set forth in the Investment Summary.
 - 2.3 *Consulting Services:* If you have purchased any Business Process Consulting services, if they have been quoted as fixed-fee services, they will be invoiced 50% upon your acceptance of the Best Practice Recommendations, by module, and 50% upon your acceptance of custom desktop procedures, by module. If you have purchased any Business Process Consulting services and they are quoted as an estimate, then we will bill you the actual services delivered on a time and materials basis.
 - 2.4 *Conversions:* Fixed-fee conversions are invoiced 50% upon initial delivery of the converted Data, by conversion option, and 50% upon Client acceptance to load the converted Data into Live/Production environment, by conversion option. Where conversions are quoted as estimated, we will bill you the actual services delivered on a time and materials basis.
 - 2.5 *Requested Modifications to the Tyler Software:* Requested modifications to the Tyler Software are invoiced 50% upon delivery of specifications and 50% upon delivery of the applicable modification. You must report any failure of the modification to conform to the specifications within thirty (30) days of delivery; otherwise, the modification will be deemed to be in compliance with the specifications after the 30-day window has passed. You may still report Defects to us as set forth in this Agreement.
 - 2.6 *Other Fixed Price Services:* Unless otherwise indicated, other fixed price services are invoiced as delivered, at the rates set forth in the Investment Summary. For the avoidance of doubt, where "Project Planning Services" are provided, payment will be due upon delivery of the Implementation Planning document.

3. Third Party Products.
 - 3.1 *Third Party Software License Fees:* License fees for Third Party Software, if any, are invoiced when we make it available to you for downloading.
 - 3.2 *Third Party Software Maintenance:* The first year maintenance for the Third Party Software is invoiced when we make it available to you for downloading.
 - 3.3 *Third Party Hardware:* Third Party Hardware costs, if any, are invoiced upon delivery. The foregoing notwithstanding, hardware fees for units with Tyler Drive installed on them are invoiced upon installation.
 - 3.4 *Third Party Services:* Fees for Third Party Services, if any, are invoiced as delivered, along with applicable expenses, at the rates set forth in the Investment Summary.
4. Expenses. The service rates in the Investment Summary do not include travel expenses. Expenses for Tyler delivered services will be billed as incurred and only in accordance with our then-current Business Travel Policy, plus a 10% travel agency processing fee. Our current Business Travel Policy is attached to this Exhibit B as Schedule 1. Copies of receipts will be provided upon request; we reserve the right to charge you an administrative fee depending on the extent of your requests. Receipts for miscellaneous items less than twenty-five dollars and mileage logs are not available.
5. Transportation Solution Fees. Notwithstanding language to the contrary in this Exhibit B, fees for Tyler transportation solution items are invoiced in accordance with the following:
 - 5.1 Software License fees. 100% on software availability
 - 5.2 Hosting Services. Year one hosting fees (when hosting and annual maintenance are priced separately), for the one (1) year period commencing when hosting services are made available (the "Hosting Services Availability Date") are invoiced on the Hosting Services Availability Date. Subsequent years's hosting fees are due in advance, at our then-current rates, on each anniversary of the anniversary of the Hosting Services Availability Date.
 - 5.3 Services.
 - 5.3.1 *Implementation and Other Professional Services (including training):* Implementation and training fees for transportation solutions are invoiced as follows: (a) Implementation fee is billed and invoiced when the map is available to you in Tyler's data center and (b) Base Training is billed and invoiced upon completion of the Base Training.
 - 5.3.2 *Other Professional Services:* Other professional services, such as route building, project management, consulting, additional product training, hardware installation, additional maps and self-installation training, are invoiced as delivered.
 - 5.4 Third Party Products.
 - 5.4.1 *Third Party Software Maintenance:* First year maintenance fees for the Third Party Software, if any, are invoiced when we make that Third Party Software is made available to you ("Software Access Date") and cover the one (1) year period commencing the first day of the month following the Software Access Date.
 - 5.4.2 *Third Party Hardware, Installation Services, Self-Installation Training Services and Shipping and Handling:* Third Party Hardware, installation services, and shipping and handling costs, if any, are invoiced upon completion of installation, in the event we are performing the installation. Third Party Hardware, self-installation training services and shipping and handling costs, if any, are invoiced upon delivery, in the event you are performing the installation.

- 5.4.3 *Third Party Hardware Maintenance: The first year maintenance fees for the Third Party Hardware are invoiced when installation/shipment takes place commencing as follows: (a) if installation/shipment occurs between the first day and fourteenth day of the month, maintenance shall commence on the first day of that month; or (b) if installation/shipment occurs between the fifteenth day and the last day of the month, maintenance shall commence on the first day of the following month. Subsequent maintenance fees for the Third Party Hardware are invoiced annually in advance of each anniversary thereof.*

Payment. Payment for undisputed invoices is due within forty-five (45) days of the invoice date. We prefer to receive payments electronically. Our electronic payment information is available by contacting AR@tylertech.com.



Exhibit B
Schedule 1
Business Travel Policy

1. Air Travel

A. Reservations & Tickets

The Travel Management Company (TMC) used by Tyler will provide an employee with a direct flight within two hours before or after the requested departure time, assuming that flight does not add more than three hours to the employee's total trip duration and the fare is within \$100 (each way) of the lowest logical fare. If a net savings of \$200 or more (each way) is possible through a connecting flight that is within two hours before or after the requested departure time and that does not add more than three hours to the employee's total trip duration, the connecting flight should be accepted.

Employees are encouraged to make advanced reservations to take full advantage of discount opportunities. Employees should use all reasonable efforts to make travel arrangements at least two (2) weeks in advance of commitments. A seven (7) day advance booking requirement is mandatory. When booking less than seven (7) days in advance, management approval will be required.

Except in the case of international travel where a segment of continuous air travel is six (6) or more consecutive hours in length, only economy or coach class seating is reimbursable. Employees shall not be reimbursed for "Basic Economy Fares" because these fares are non-refundable and have many restrictions that outweigh the cost-savings.

B. Baggage Fees

Reimbursement of personal baggage charges are based on trip duration as follows:

- Up to five (5) days = one (1) checked bag
- Six (6) or more days = two (2) checked bags

Baggage fees for sports equipment are not reimbursable.

2. Ground Transportation

A. Private Automobile

Mileage Allowance – Business use of an employee's private automobile will be reimbursed at the current IRS allowable rate, plus out of pocket costs for tolls and parking. Mileage will be calculated by using the employee's office as the starting and ending point, in compliance with IRS regulations. Employees who have been designated a home office should calculate miles from their home.

B. Rental Car

Employees are authorized to rent cars only in conjunction with air travel when cost, convenience, and the specific situation reasonably require their use. When renting a car for Tyler business, employees should select a "mid-size" or "intermediate" car. "Full" size cars may be rented when three or more employees are traveling together. Tyler carries leased vehicle coverage for business car rentals; except for employees traveling to Alaska and internationally (excluding Canada), additional insurance on the rental agreement should be declined.

C. Public Transportation

Taxi or airport limousine services may be considered when traveling in and around cities or to and from airports when less expensive means of transportation are unavailable or impractical. The actual fare plus a reasonable tip (15-18%) are reimbursable. In the case of a free hotel shuttle to the airport, tips are included in the per diem rates and will not be reimbursed separately.

D. Parking & Tolls

When parking at the airport, employees must use longer term parking areas that are measured in days as opposed to hours. Park and fly options located near some airports may also be used. For extended trips that would result in excessive parking charges, public transportation to/from the airport should be considered. Tolls will be reimbursed when receipts are presented.

3. Lodging

Tyler's TMC will select hotel chains that are well established, reasonable in price, and conveniently located in relation to the traveler's work assignment. Typical hotel chains include Courtyard, Fairfield Inn, Hampton Inn, and Holiday Inn Express. If the employee has a discount rate with a local hotel, the hotel reservation should note that discount and the employee should confirm the lower rate with the hotel upon arrival. Employee memberships in travel clubs such as AAA should be noted in their travel profiles so that the employee can take advantage of any lower club rates.

"No shows" or cancellation fees are not reimbursable if the employee does not comply with the hotel's cancellation policy.

Tips for maids and other hotel staff are included in the per diem rate and are not reimbursed separately.

Employees are not authorized to reserve non-traditional short-term lodging, such as Airbnb, VRBO, and HomeAway. Employees who elect to make such reservations shall not be reimbursed.

4. Meals and Incidental Expenses

Employee meals and incidental expenses while on travel status within the continental U.S. are in accordance with the federal per diem rates published by the General Services Administration. Incidental expenses include tips to maids, hotel staff, and shuttle drivers and other minor travel expenses. Per diem rates are available at www.gsa.gov/perdiem.

Per diem for Alaska, Hawaii, U.S. protectorates and international destinations are provided separately by the Department of State and will be determined as required.

A. Overnight Travel

For each full day of travel, all three meals are reimbursable. Per diems on the first and last day of a trip are governed as set forth below.

Departure Day

Depart before 12:00 noon	Lunch and dinner
Depart after 12:00 noon	Dinner

Return Day

Return before 12:00 noon	Breakfast
Return between 12:00 noon & 7:00 p.m.	Breakfast and lunch
Return after 7:00 p.m.*	Breakfast, lunch and dinner

*7:00 p.m. is defined as direct travel time and does not include time taken to stop for dinner.

The reimbursement rates for individual meals are calculated as a percentage of the full day per diem as follows:

Breakfast	15%
Lunch	25%
Dinner	60%

B. Same Day Travel

Employees traveling at least 100 miles to a site and returning in the same day are eligible to claim lunch on an expense report. Employees on same day travel status are eligible to claim dinner in the event they return home after 7:00 p.m.*

*7:00 p.m. is defined as direct travel time and does not include time taken to stop for dinner.

5. Internet Access – Hotels and Airports

Employees who travel may need to access their e-mail at night. Many hotels provide free high speed internet access and Tyler employees are encouraged to use such hotels whenever possible. If an employee's hotel charges for internet access it is reimbursable up to \$10.00 per day. Charges for internet access at airports are not reimbursable.

6. International Travel

All international flights with the exception of flights between the U.S. and Canada should be reserved through TMC using the "lowest practical coach fare" with the exception of flights that are six (6) or more consecutive hours in length. In such event, the next available seating class above coach shall be reimbursed.

When required to travel internationally for business, employees shall be reimbursed for photo fees, application fees, and execution fees when obtaining a new passport book, but fees related to passport renewals are not reimbursable. Visa application and legal fees, entry taxes and departure taxes are reimbursable.

The cost of vaccinations that are either required for travel to specific countries or suggested by the U.S. Department of Health & Human Services for travel to specific countries, is reimbursable.

Section 4, Meals & Incidental Expenses, and Section 2.b., Rental Car, shall apply to this section.



Exhibit C Service Level Agreement

I. Agreement Overview

This SLA operates in conjunction with, and does not supersede or replace any part of, the Agreement. It outlines the information technology service levels that we will provide to you to ensure the availability of the application services that you have requested us to provide. All other support services are documented in the Support Call Process.

II. Definitions. Except as defined below, all defined terms have the meaning set forth in the Agreement.

Attainment: The percentage of time the Tyler Software is available during a calendar quarter, with percentages rounded to the nearest whole number.

Client Error Incident: Any service unavailability resulting from your applications, content or equipment, or the acts or omissions of any of your service users or third-party providers over whom we exercise no control.

Downtime: Those minutes during which the Tyler Software is not available for your use. Downtime does not include those instances in which only a Defect is present.

Service Availability: The total number of minutes in a calendar quarter that the Tyler Software is capable of receiving, processing, and responding to requests, excluding maintenance windows, Client Error Incidents and Force Majeure.

III. Service Availability

The Service Availability of the Tyler Software is intended to be 24/7/365. We set Service Availability goals and measures whether we have met those goals by tracking Attainment.

a. Your Responsibilities

Whenever you experience Downtime, you must make a support call according to the procedures outlined in the Support Call Process. You will receive a support incident number.

You must document, in writing, all Downtime that you have experienced during a calendar quarter. You must deliver such documentation to us within 30 days of a quarter's end.

The documentation you provide must evidence the Downtime clearly and convincingly. It must include, for example, the support incident number(s) and the date, time and duration of the Downtime(s).

b. Our Responsibilities

When our support team receives a call from you that Downtime has occurred or is occurring, we will work with you to identify the cause of the Downtime (including whether it may be the result of a Client Error Incident or Force Majeure). We will also work with you to resume normal operations.



Upon timely receipt of your Downtime report, we will compare that report to our own outage logs and support tickets to confirm that Downtime for which we were responsible indeed occurred.

We will respond to your Downtime report within 30 day(s) of receipt. To the extent we have confirmed Downtime for which we are responsible, we will provide you with the relief set forth below.

c. Client Relief

When a Service Availability goal is not met due to confirmed Downtime, we will provide you with relief that corresponds to the percentage amount by which that goal was not achieved, as set forth in the Client Relief Schedule below.

Notwithstanding the above, the total amount of all relief that would be due under this SLA per quarter will not exceed 5% of one quarter of the then-current SaaS Fee. The total credits confirmed by us in one or more quarters of a billing cycle will be applied to the SaaS Fee for the next billing cycle. Issuing of such credit does not relieve us of our obligations under the Agreement to correct the problem which created the service interruption.

Every quarter, we will compare confirmed Downtime to Service Availability. In the event actual Attainment does not meet the targeted Attainment, the following Client relief will apply, on a quarterly basis:

Targeted Attainment	Actual Attainment	Client Relief
100%	98-99%	Remedial action will be taken.
100%	95-97%	4% credit of fee for affected calendar quarter will be posted to next billing cycle
100%	<95%	5% credit of fee for affected calendar quarter will be posted to next billing cycle

You may request a report from us that documents the preceding quarter's Service Availability, Downtime, any remedial actions that have been/will be taken, and any credits that may be issued.

IV. Applicability

The commitments set forth in this SLA do not apply during maintenance windows, Client Error Incidents, and Force Majeure.

We perform maintenance during limited windows that are historically known to be reliably low-traffic times. If and when maintenance is predicted to occur during periods of higher traffic, we will provide advance notice of those windows and will coordinate to the greatest extent possible with you.

V. Force Majeure

You will not hold us responsible for not meeting service levels outlined in this SLA to the extent any failure to do so is caused by Force Majeure. In the event of Force Majeure, we will file with you a signed request that said failure be excused. That writing will at least include the essential details and circumstances supporting our request for relief pursuant to this Section. You will not unreasonably withhold its acceptance of such a request.



Exhibit C

Schedule 1

Support Call Process

Support Channels

Tyler Technologies, Inc. provides the following channels of software support:

- (1) Tyler Community – an on-line resource, Tyler Community provides a venue for all Tyler clients with current maintenance agreements to collaborate with one another, share best practices and resources, and access documentation.
- (2) On-line submission (portal) – for less urgent and functionality-based questions, users may create unlimited support incidents through the customer relationship management portal available at the Tyler Technologies website.
- (3) Email – for less urgent situations, users may submit unlimited emails directly to the software support group.
- (4) Telephone – for urgent or complex questions, users receive toll-free, unlimited telephone software support.

Support Resources

A number of additional resources are available to provide a comprehensive and complete support experience:

- (1) Tyler Website – www.tylertech.com – for accessing client tools and other information including support contact information.
- (2) Tyler Community – available through login, Tyler Community provides a venue for clients to support one another and share best practices and resources.
- (3) Knowledgebase – A fully searchable depository of thousands of documents related to procedures, best practices, release information, and job aides.
- (4) Program Updates – where development activity is made available for client consumption

Support Availability

Tyler Technologies support is available during the local business hours of 8 AM to 5 PM (Monday – Friday) across four US time zones (Pacific, Mountain, Central and Eastern). Clients may receive coverage across these time zones. Tyler’s holiday schedule is outlined below. There will be no support coverage on these days.

New Year’s Day	Thanksgiving Day
Memorial Day	Day after Thanksgiving
Independence Day	Christmas Day
Labor Day	



Issue Handling

Incident Tracking

Every support incident is logged into Tyler's Customer Relationship Management System and given a unique incident number. This system tracks the history of each incident. The incident tracking number is used to track and reference open issues when clients contact support. Clients may track incidents, using the incident number, through the portal at Tyler's website or by calling software support directly.

Incident Priority

Each incident is assigned a priority number, which corresponds to the client's needs and deadlines. The client is responsible for reasonably setting the priority of the incident per the chart below. This chart is not intended to address every type of support incident, and certain "characteristics" may or may not apply depending on whether the Tyler software has been deployed on customer infrastructure or the Tyler cloud. The goal is to help guide the client towards clearly understanding and communicating the importance of the issue and to describe generally expected responses and resolutions.

Priority Level	Characteristics of Support Incident	Resolution Targets
1 Critical	Support incident that causes (a) complete application failure or application unavailability; (b) application failure or unavailability in one or more of the client's remote location; or (c) systemic loss of multiple essential system functions.	Tyler shall provide an initial response to Priority Level 1 incidents within one (1) business hour of receipt of the support incident. Tyler shall use commercially reasonable efforts to resolve such support incidents or provide a circumvention procedure within one (1) business day. For non-hosted customers, Tyler's responsibility for lost or corrupted Data is limited to assisting the client in restoring its last available database.
2 High	Support incident that causes (a) repeated, consistent failure of essential functionality affecting more than one user or (b) loss or corruption of Data.	Tyler shall provide an initial response to Priority Level 2 incidents within four (4) business hours of receipt of the support incident. Tyler shall use commercially reasonable efforts to resolve such support incidents or provide a circumvention procedure within ten (10) business days. For non-hosted customers, Tyler's responsibility for loss or corrupted Data is limited to assisting the client in restoring its last available database.
3 Medium	Priority Level 1 incident with an existing circumvention procedure, or a Priority Level 2 incident that affects only one user or for which there is an existing circumvention procedure.	Tyler shall provide an initial response to Priority Level 3 incidents within one (1) business day of receipt of the support incident. Tyler shall use commercially reasonable efforts to resolve such support incidents without the need for a circumvention procedure with the next published maintenance update or service pack. For non-hosted customers, Tyler's responsibility for lost or corrupted Data is limited to assisting the client in restoring its last available database.

Priority Level	Characteristics of Support Incident	Resolution Targets
4 Non-critical	Support incident that causes failure of non-essential functionality or a cosmetic or other issue that does not qualify as any other Priority Level.	Tyler shall provide an initial response to Priority Level 4 incidents within two (2) business days. Tyler shall use commercially reasonable efforts to resolve such support incidents, as well as cosmetic issues, with a future version release.

Incident Escalation

Tyler Technology's software support consists of four levels of personnel:

- (1) Level 1: front-line representatives
- (2) Level 2: more senior in their support role, they assist front-line representatives and take on escalated issues
- (3) Level 3: assist in incident escalations and specialized client issues
- (4) Level 4: responsible for the management of support teams for either a single product or a product group

If a client feels they are not receiving the service needed, they may contact the appropriate Software Support Manager. After receiving the incident tracking number, the manager will follow up on the open issue and determine the necessary action to meet the client's needs.

On occasion, the priority or immediacy of a software support incident may change after initiation. Tyler encourages clients to communicate the level of urgency or priority of software support issues so that we can respond appropriately. A software support incident can be escalated by any of the following methods:

- (1) Telephone – for immediate response, call toll-free to either escalate an incident's priority or to escalate an issue through management channels as described above.
- (2) Email – clients can send an email to software support in order to escalate the priority of an issue
- (3) On-line Support Incident Portal – clients can also escalate the priority of an issue by logging into the client incident portal and referencing the appropriate incident tracking number.

Remote Support Tool

Some support calls require further analysis of the client's database, process or setup to diagnose a problem or to assist with a question. Tyler will, at its discretion, use an industry-standard remote support tool. Support is able to quickly connect to the client's desktop and view the site's setup, diagnose problems, or assist with screen navigation. More information about the remote support tool Tyler uses is available upon request.



Exhibit D

Reserved.



Exhibit E
Statement of Work

REMAINDER OF PAGE INTENTIONALLY LEFT BLANK

Newport Mesa Unified School District

SOW from Tyler Technologies, Inc.

1/11/2022

Presented to:
Kevin Seckington
2985 Bear St
Costa Mesa, CA 92626-4300

Contact:
Damian Cummings
Email: Damian.Cummings@TylerTech.com
370 US Route 1, Falmouth, ME 04105

Table of Contents

PART 1: EXECUTIVE SUMMARY	1
1. Project Overview.....	1
1.1 Introduction	1
1.2 Project Goals	1
1.3 Methodology.....	1
PART 2: PROJECT FOUNDATION	3
2. Project Governance	3
3. Project Scope Control	4
3.1 Managing Scope and Project Change	4
3.2 Change Control	4
3.3 Change Request Management.....	4
4. Acceptance Process	6
5. Roles and Responsibilities	6
5.1 Tyler Roles & Responsibilities	6
5.1.1 Tyler Executive Manager.....	7
5.1.2 Tyler Implementation Manager	7
5.1.3 Tyler Project Manager.....	7
5.1.4 Tyler Implementation Consultant	8
5.1.5 Tyler Sales	8
5.1.6 Tyler Technical Services	8
5.2 Newport Mesa USD Roles & Responsibilities	9
5.2.1 Newport Mesa USD Executive Sponsor	9
5.2.2 Newport Mesa USD Steering Committee	9
5.2.3 Newport Mesa USD Project Manager	10
5.2.4 Newport Mesa USD Functional Leads.....	11
5.2.5 Newport Mesa USD Power Users	11
5.2.6 Newport Mesa USD End Users.....	12
5.2.7 Newport Mesa USD Technical Lead	12
5.2.8 Newport Mesa USD Change Management Lead	13
PART 3: PROJECT PLAN.....	14
6. Project Stages.....	14
6.1 Initiate and Plan	15
6.1.1 Initial Coordination	15
6.1.2 Project/Phase Planning	16
6.1.3 Infrastructure Planning	17



6.1.4	Stakeholder Meeting.....	18
6.1.5	GIS Preparation	19
6.1.6	Control Point 1: Initiate & Plan Stage Acceptance.....	20
6.2	Assess & Define	21
6.2.1	Solution Orientation.....	21
6.2.2	Current & Future State Analysis.....	21
6.2.3	Intentionally left blank.	23
6.2.4	Intentionally left blank.	23
6.2.5	Intentionally left blank.	23
6.2.6	Control Point 2: Assess & Define Stage Acceptance	23
6.3	Prepare Solution	23
6.3.1	Initial System Deployment	23
6.3.2	Configuration	24
6.3.3	Process Refinement	25
6.3.4	Intentionally left blank.	27
6.3.5	Intentionally left blank.	27
6.3.6	Intentionally left blank.	27
6.3.7	Control Point 3: Prepare Solution Stage Acceptance.....	27
6.4	Production Readiness	27
6.4.1	Solution Validation	27
6.4.2	Go-Live Readiness	28
6.4.3	End User Training.....	29
6.4.4	Control Point 4: Production Readiness Stage Acceptance.....	30
6.5	Production.....	31
6.5.1	Go-Live	31
6.5.2	Transition to Client Services.....	32
6.5.3	Post Go-Live Activities.....	33
6.5.4	Control Point 5: Production Stage Acceptance.....	34
6.6	Close.....	34
6.6.1	Phase Closeout	35
6.6.2	Project Closeout.....	36
6.6.3	Control Point 6: Close Stage Acceptance	37
7.	General Assumptions	37
7.1	Project.....	37
7.2	Organizational Change Management	37
7.3	Resources and Scheduling.....	38
7.4	Intentionally left blank.	38
7.5	Facilities.....	38
8.	Glossary	39
PART 4:	APPENDICES	42
9.	No Conversion - Intentionally left blank.....	42



10.	Additional Appendices.....	43
11.	Project Timeline	44
11.1	Traversa Timeline.....	44



Part 1: Executive Summary

1. Project Overview

1.1 Introduction

Tyler Technologies (“Tyler”) is the largest and most established provider of integrated software and technology services focused solely on the public sector. Tyler’s end-to-end solutions empower public sector entities including local, state, provincial and federal government, to operate more efficiently and connect more transparently with their constituents and with each other. By connecting data and processes across disparate systems, Tyler’s solutions transform how clients gain actionable insights that solve problems in their communities.

1.2 Project Goals

This Statement of Work (“SOW”) documents the methodology, implementation stages, activities, and roles and responsibilities, and project scope listed in the Investment Summary of the Agreement between Tyler and the Newport Mesa USD (collectively the “Project”).

The overall goals of the project are to:

- Successfully implement the contracted scope on time and on budget
- Increase operational efficiencies and empower users to be more productive
- Improve accessibility and responsiveness to external and internal customer needs
- Overcome current challenges and meet future goals
- Providing a single, comprehensive, and integrated solution to manage business functions
- Streamline business processes through automation, integration, and workflows
- Provide a user-friendly user interface to promote system use and productivity
- Eliminate redundant data entry

1.3 Methodology

This is accomplished by the Newport Mesa USD and Tyler working as a partnership and Tyler utilizing its depth of implementation experience. While each Project is unique, all will follow Tyler’s six-stage methodology. Each of the six stages is comprised of multiple work packages, and each work package includes a narrative description, objectives, tasks, inputs, outputs/deliverables, assumptions, and a responsibility matrix.

Tailored specifically for Tyler’s public sector clients, the project methodology contains Stage Acceptance Control Points throughout each Phase to ensure adherence to scope, budget, timeline controls, effective communications, and quality standards. Clearly defined, the project methodology repeats consistently across Phases, and is scaled to meet the Newport Mesa USD’s complexity and organizational needs.



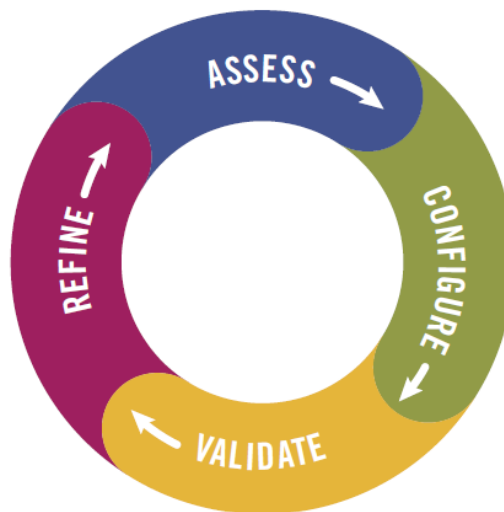
Tyler's Six Stage Project Methodology



The methodology adapts to both single-phase and multiple-phase projects.

To achieve Project success, it is imperative that both the Newport Mesa USD and Tyler commit to including the necessary leadership and governance. During each stage of the Project, it is expected that the Newport Mesa USD and Tyler Project teams work collaboratively to complete tasks. An underlying principle of Tyler's Implementation process is to employ an iterative model where the Newport Mesa USD's business processes are assessed, configured, validated, and refined cyclically in line with the project budget. This approach is used in multiple stages and work packages as illustrated in the graphic below.

Iterative Project Model



The delivery approach is systematic, which reduces variability and mitigates risks to ensure Project success. As illustrated, some stages, along with work packages and tasks, are intended to be overlapping by nature to complete the Project efficiently and effectively.



Part 2: Project Foundation

2. Project Governance

Project governance is the management framework within which Project decisions are made. The role of Project governance is to provide a decision-making approach that is logical, robust, and repeatable. This allows organizations to have a structured approach for conducting its daily business in addition to project related activities.

This section outlines the resources required to meet the business needs, objectives, and priorities for the Project, communicate the goals to other Project participants, and provide support and guidance to accomplish these goals. Project governance defines the structure for escalation of issues and risks, Change Control review and authority, and Organizational Change Management activities. Throughout the Statement of Work Tyler has provided RACI Matrices for activities to be completed throughout the implementation which will further outline responsibilities of different roles in each stage. Further refinement of the governance structure, related processes, and specific roles and responsibilities occurs during the Initiate & Plan Stage.

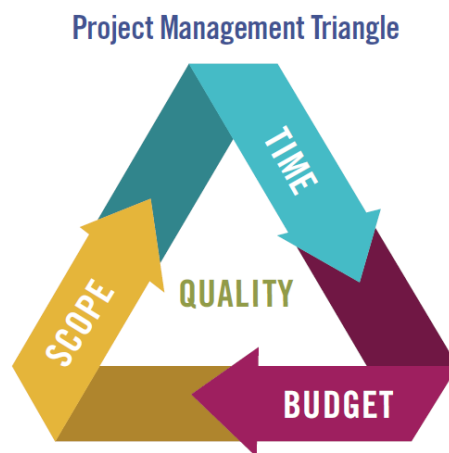
The chart below illustrates an overall team perspective where Tyler and the Newport Mesa USD collaborate to resolve Project challenges according to defined escalation paths. If project managers do not possess authority to determine a solution, resolve an issue, or mitigate a risk, Tyler implementation management and the Newport Mesa USD Steering Committee become the escalation points to triage responses prior to escalation to the Newport Mesa USD and Tyler executive sponsors. As part of the escalation process, each Project governance tier presents recommendations and supporting information to facilitate knowledge transfer and issue resolution. The Newport Mesa USD and Tyler executive sponsors serve as the final escalation point.



3. Project Scope Control

3.1 Managing Scope and Project Change

Project Management governance principles contend that there are three connected constraints on a Project: budget, timeline, and scope. These constraints, known as the “triple constraints” or project management triangle, define budget in terms of financial cost, labor costs, and other resource costs. Scope is defined as the work performed to deliver a product, service or result with the specified features and functions, while time is simply defined as the schedule. The Triple Constraint theory states that if you change one side of the triangle, the other two sides must be correspondingly adjusted. For example, if the scope of the Project is increased, cost and time to complete will also need to increase. The Project and executive teams will need to remain cognizant of these constraints when making impactful decisions to the Project. A simple illustration of this triangle is included here, showing the connection of each item and their relational impact to the overall Scope.



A pillar of any successful project is the ability to properly manage scope while allowing the appropriate level of flexibility to incorporate approved changes. Scope and changes within the project will be managed using the change control process outlined in the following section.

3.2 Change Control

It may become necessary to change the scope of this Project due to unforeseeable circumstances (e.g., new constraints or opportunities are discovered). This Project is being undertaken with the understanding that Project scope, schedule, and/or cost may need to change to produce optimal results for stakeholders. Changes to contractual requirements will follow the change control process specified in the final contract, and as described below.

3.3 Change Request Management

Should the need for a change to Project scope, schedule, and/or cost be identified during the Project, the change will be brought to the attention of the Steering Committee and an assessment of the change will occur. While such changes may result in additional costs and delays relative to the schedule, some changes may result in less cost to the Newport Mesa USD; for example, the Newport Mesa USD may decide it no



longer needs a deliverable originally defined in the Project. The Change Request will include the following information:

- The nature of the change.
- A good faith estimate of the additional cost or associated savings to the Newport Mesa USD, if any.
- The timetable for implementing the change.
- The effect on and/or risk to the schedule, resource needs or resource responsibilities.

The Newport Mesa USD will use its good faith efforts to either approve or disapprove any Change Request within ten (10) Business Days (or other period as mutually agreeable between Tyler and the Newport Mesa USD). Any changes to the Project scope, budget, or timeline must be documented and approved in writing using a Change Request form. These changes constitute a formal amendment to the Statement of Work and will supersede any conflicting term in the Statement of Work.



4. Acceptance Process

The implementation of a Project involves many decisions to be made throughout its lifecycle. Decisions will vary from higher level strategy decisions to smaller, detailed Project level decisions. It is critical to the success of the Project that each Newport Mesa USD office or department designates specific individuals for making decisions on behalf of their offices or departments.

Both Tyler and the Newport Mesa USD will identify representative project managers. These individuals will represent the interests of all stakeholders and serve as the primary contacts between the two organizations.

The coordination of gaining Newport Mesa USD feedback and approval on Project deliverables will be critical to the success of the Project. The Newport Mesa USD project manager will strive to gain deliverable and decision approvals from all authorized Newport Mesa USD representatives. Given that the designated decision-maker for each department may not always be available, there must be a designated proxy for each decision point in the Project. Assignment of each proxy will be the responsibility of the leadership from each Newport Mesa USD department. The proxies will be named individuals that have the authorization to make decisions on behalf of their department.

The following process will be used for accepting Deliverables and Control Points:

- The Newport Mesa USD shall have five (5) business days from the date of delivery, or as otherwise mutually agreed upon by the parties in writing, to accept each Deliverable or Control Point. If the Newport Mesa USD does not provide acceptance or acknowledgement within five (5) business days, or the otherwise agreed upon timeframe, not to be unreasonably withheld, Tyler deems the Deliverable or Control Point as accepted.
- If the Newport Mesa USD does not agree the Deliverable or Control Point meets requirements, the Newport Mesa USD shall notify Tyler project manager(s), in writing, with reasoning within five (5) business days, or the otherwise agreed-upon timeframe, not to be unreasonably withheld, of receipt of the Deliverable.
- Tyler shall address any deficiencies and redeliver the Deliverable or Control Point. The Newport Mesa USD shall then have two (2) business days from receipt of the redelivered Deliverable or Control Point to accept or again submit written notification of reasons for rejecting the milestone. If the Newport Mesa USD does not provide acceptance within two (2) business days, or the otherwise agreed upon timeframe, not to be unreasonably withheld, Tyler deems the Deliverable or Control Point as accepted.

5. Roles and Responsibilities

The following defines the roles and responsibilities of each Project resource for the Newport Mesa USD and Tyler. Roles and responsibilities may not follow the organizational chart or position descriptions at the Newport Mesa USD, but are roles defined within the Project. It is common for individual resources on both the Tyler and Newport Mesa USD project teams to fill multiple roles. Similarly, it is common for some roles to be filled by multiple people.

5.1 Tyler Roles & Responsibilities

Tyler assigns a project manager prior to the start of each Phase of the Project (some Projects may only be one Phase in duration). Additional Tyler resources are assigned as the schedule develops and as needs arise.



5.1.1 Tyler Executive Manager

Tyler executive management has indirect involvement with the Project and is part of the Tyler escalation process. This team member offers additional support to the Project team and collaborates with other Tyler department managers as needed to escalate and facilitate implementation Project tasks and decisions.

- Provides clear direction for Tyler staff on executing on the Project Deliverables to align with satisfying the Newport Mesa USD 's overall organizational strategy.
- Authorizes required Project resources.
- Resolves all decisions and/or issues not resolved at the implementation management level as part of the escalation process.
- Acts as the counterpart to the Newport Mesa USD 's executive sponsor.

5.1.2 Tyler Implementation Manager

- Tyler implementation management has indirect involvement with the Project and is part of the Tyler escalation process. The Tyler project managers consult implementation management on issues and outstanding decisions critical to the Project. Implementation management works toward a solution with the Tyler Project Manager or with Newport Mesa USD management as appropriate. Tyler executive management is the escalation point for any issues not resolved at this level.
- Assigns Tyler Project personnel.
- Provides support for the Project team.
- Provides management support for the Project to ensure it is staffed appropriately and staff have necessary resources.
- Monitors Project progress including progress towards agreed upon goals and objectives.

5.1.3 Tyler Project Manager

- The Tyler project manager(s) provides oversight of the Project, coordination of Tyler resources between departments, management of the Project budget and schedule, effective risk, and issue management, and is the primary point of contact for all Project related items. As requested by the Newport Mesa USD, the Tyler Project Manager provides regular updates to the Newport Mesa USD Steering Committee and other Tyler governance members. Tyler Project Manager's role includes responsibilities in the following areas:

5.1.3.1 Contract Management

- Validates contract compliance throughout the Project.
- Ensures Deliverables meet contract requirements.
- Acts as primary point of contact for all contract and invoicing questions.
- Prepares and presents contract milestone sign-offs for acceptance by the Newport Mesa USD project manager(s).
- Coordinates Change Requests, if needed, to ensure proper Scope and budgetary compliance.

5.1.3.2 Planning

- Delivers project planning documents.
- Defines Project tasks and resource requirements.
- Develops initial Project schedule and Project Management Plan.



- Collaborates with the Newport Mesa USD project manager(s) to plan and schedule Project timelines to achieve on-time implementation.

5.1.3.3 Implementation Management

- Tightly manages Scope and budget of Project to ensure Scope changes and budget planned versus actual are transparent and handled effectively and efficiently.
- Establishes and manages a schedule and Tyler resources that properly support the Project Schedule and are also in balance with Scope/budget.
- Establishes risk/issue tracking/reporting process between the Newport Mesa USD and Tyler and takes all necessary steps to proactively mitigate these items or communicate with transparency to the Newport Mesa USD any items that may impact the outcomes of the Project.
- Collaborates with the Newport Mesa USD 's project manager(s) to establish key business drivers and success indicators that will help to govern Project activities and key decisions to ensure a quality outcome of the project.
- Collaborates with the Newport Mesa USD 's project manager(s) to set a routine communication plan that will aide all Project team members, of both the Newport Mesa USD and Tyler, in understanding the goals, objectives, status, and health of the Project.

5.1.3.4 Resource Management

- Acts as liaison between Project team and Tyler manager(s).
- Identifies and coordinates all Tyler resources across all applications, Phases, and activities including development, forms, installation, reports, implementation, and billing.
- Provides direction and support to Project team.
- Manages the appropriate assignment and timely completion of tasks as defined in the Project Schedule, task list, and Go-Live Checklist.
- Assesses team performance and adjusts as necessary.
- Consulted on in Scope 3rd party providers to align activities with ongoing Project tasks.

5.1.4 Tyler Implementation Consultant

- Completes tasks as assigned by the Tyler project manager(s).
- Documents activities for services performed by Tyler.
- Guides the Newport Mesa USD through software validation process following configuration.
- Assists during Go-Live process and provides support until the Newport Mesa USD transitions to Client Services.
- Facilitates training sessions and discussions with the Newport Mesa USD and Tyler staff to ensure adequate discussion of the appropriate agenda topics during the allotted time.

5.1.5 Tyler Sales

- Supports Sales to Implementation knowledge transfer during Initiate & Plan.
- Provides historical information, as needed, throughout implementation.
- Participates in pricing activities if additional licensing and/or services are needed.

5.1.6 Tyler Technical Services

- Maintains Tyler infrastructure requirements and design document(s).
- Involved in system infrastructure planning/review(s).
- Provides first installation of licensed software with initial database on servers.



- Supports and assists the project team with technical/environmental issues/needs.
- Deploys Tyler products.
- Conducts GIS Planning.
- Reviews GIS data and provides feedback to the Newport Mesa USD.
- Loads Newport Mesa USD provided GIS data into the system.

5.2 Newport Mesa USD Roles & Responsibilities

Newport Mesa USD resources will be assigned prior to the start of each Phase of the Project. One person may be assigned to multiple Project roles.

5.2.1 Newport Mesa USD Executive Sponsor

The Newport Mesa USD executive sponsor provides support to the Project by providing strategic direction and communicating key issues about the Project and its overall importance to the organization. When called upon, the executive sponsor also acts as the final authority on all escalated Project issues. The executive sponsor engages in the Project, as needed, to provide necessary support, oversight, guidance, and escalation, but does not participate in day-to-day Project activities. The executive sponsor empowers the Newport Mesa USD steering committee, project manager(s), and functional leads to make critical business decisions for the Newport Mesa USD.

- Champions the project at the executive level to secure buy-in.
- Authorizes required project resources.
- Actively participates in organizational change communications.

5.2.2 Newport Mesa USD Steering Committee

The Newport Mesa USD steering committee understands and supports the cultural change necessary for the Project and fosters an appreciation for the Project's value throughout the organization. The steering committee oversees the Newport Mesa USD project manager and Project through participation in regular internal meetings. The Newport Mesa USD steering committee remains updated on all Project progress, Project decisions, and achievement of Project milestones. The Newport Mesa USD steering committee also serves as primary level of issue resolution for the Project.

- Works to resolve all decisions and/or issues not resolved at the project manager level as part of the escalation process.
- Attends all scheduled steering committee meetings.
- Provides support for the project team.
- Assists with communicating key project messages throughout the organization.
- Prioritizes the project within the organization.
- Ensures the project staffed appropriately and that staff have necessary resources.
- Monitors project progress including progress towards agreed upon goals and objectives.
- Has the authority to approve or deny changes impacting the following areas:
 - Cost
 - Scope
 - Schedule
 - Project Goals
 - Newport Mesa USD Policies
 - Needs of other client projects



5.2.3 Newport Mesa USD Project Manager

The Newport Mesa USD shall assign project manager(s) prior to the start of this project with overall responsibility and authority to make decisions related to Project Scope, scheduling, and task assignment. The Newport Mesa USD Project Manager should communicate decisions and commitments to the Tyler project manager(s) in a timely and efficient manner. When the Newport Mesa USD project manager(s) do not have the knowledge or authority to make decisions, he or she engages the necessary resources to participate in discussions and make decisions in a timely fashion to avoid Project delays. The Newport Mesa USD project manager(s) are responsible for reporting to the Newport Mesa USD steering committee and determining appropriate escalation points.

5.2.3.1 Contract Management

- Validates contract compliance throughout the project.
- Ensures that invoicing and Deliverables meet contract requirements.
- Acts as primary point of contact for all contract and invoicing questions. Collaborates on and approves Change Requests, if needed, to ensure proper scope and budgetary compliance.

5.2.3.2 Planning

- Reviews and accepts project planning documents.
- Defines project tasks and resource requirements for the Newport Mesa USD project team.
- Collaborates in the development and approval of the project schedule.
- Collaborates with Tyler project manager(s) to plan and schedule project timelines to achieve on-time implementation.

5.2.3.3 Implementation Management

- Tightly manages project budget and scope.
- Collaborates with Tyler project manager(s) to establish a process and approval matrix to ensure that scope changes and budget (planned versus actual) are transparent and handled effectively and efficiently.
- Collaborates with Tyler project manager to establish and manage a schedule and resource plan that properly supports the project schedule as a whole and is also in balance with scope and budget.
- Collaborates with Tyler project manager(s) to establish risk and issue tracking and reporting process between the Newport Mesa USD and Tyler and takes all necessary steps to proactively mitigate these items or communicate with transparency to Tyler any items that may impact the outcomes of the project.
- Collaborates with Tyler project manager(s) to establish key business drivers and success indicators that will help to govern project activities and key decisions to ensure a quality outcome of the project.
- Routinely communicates with both the Newport Mesa USD staff and Tyler, aiding in the understanding of goals, objectives, current status, and health of the project by all team members.
- Manages the requirements gathering process and ensure timely and quality business requirements are being provided to Tyler.

5.2.3.4 Resource Management

- Acts as liaison between project team and stakeholders.
- Identifies and coordinates all Newport Mesa USD resources across all modules, phases, and activities including data conversions, forms design, hardware and software installation, reports building, and satisfying invoices.



- Provides direction and support to project team.
- Builds partnerships among the various stakeholders, negotiating authority to move the project forward.
- Manages the appropriate assignment and timely completion of tasks as defined.
- Assesses team performance and takes corrective action, if needed.
- Provides guidance to Newport Mesa USD technical teams to ensure appropriate response and collaboration with Tyler Technical Support Teams to ensure timely response and appropriate resolution.
- Owns the relationship with in-Scope 3rd party providers and aligns activities with ongoing project tasks.
- Ensures that users have appropriate access to Tyler project toolsets as required.
- Conducts training on proper use of toolsets.
- Validates completion of required assignments using toolsets.

5.2.4 Newport Mesa USD Functional Leads

- Makes business process change decisions under time sensitive conditions.
- Communicates existing business processes and procedures to Tyler consultants.
- Assists in identifying business process changes that may require escalation.
- Contributes business process expertise for Current & Future State Analysis.
- Identifies and includes additional subject matter experts to participate in Current & Future State Analysis.
- Validates that necessary skills have been retained by end users.
- Provides End Users with dedicated time to complete required homework tasks.
- Acts as an ambassador/champion of change for the new process and provide business process change support.
- Identifies and communicates any additional training needs or scheduling conflicts to the Newport Mesa USD project manager.
- Actively participates in all aspects of the implementation, including, but not limited to, the following key activities:
 - Task completion
 - Stakeholder Meeting
 - Project Management Plan development
 - Schedule development
 - Maintenance and monitoring of risk register
 - Escalation of issues
 - Communication with Tyler project team
 - Coordination of Newport Mesa USD resources
 - Attendance at scheduled sessions
 - Change management activities
 - Modification specification, demonstrations, testing and approval assistance
 - Data analysis assistance
 - Decentralized end user training
 - Process testing
 - Solution Validation

5.2.5 Newport Mesa USD Power Users

- Participate in project activities as required by the project team and project manager(s).
- Provide subject matter expertise on the Newport Mesa USD business processes and requirements.



- Act as subject matter experts and attend Current & Future State Analysis sessions as needed.
- Attend all scheduled training sessions.
- Participate in all required post-training processes as needed throughout project.
- Test all application configuration to ensure it satisfies business process requirements.
- Become application experts.
- Participate in Solution Validation.
- Adopt and support changed procedures.
- Complete all deliverables by the due dates defined in the project schedule.
- Demonstrate competency with Tyler products processing prior to Go-live.
- Provide knowledge transfer to the Newport Mesa USD staff during and after implementation.

5.2.6 Newport Mesa USD End Users

- Attend all scheduled training sessions.
- Become proficient in application functions related to job duties.
- Adopt and utilize changed procedures.
- Complete all deliverables by the due dates defined in the project schedule.
- Utilize software to perform job functions at and beyond Go-live.

5.2.7 Newport Mesa USD Technical Lead

- Coordinates updates and releases with Tyler as needed.
- Coordinates the copying of source databases to training/testing databases as needed for training days.
- Coordinates and adds new users, printers and other peripherals as needed.
- Validates that all users understand log-on process and have necessary permission for all training sessions.
- Coordinates interface development for Newport Mesa USD third party interfaces.
- Develops or assists in creating reports as needed.
- Ensures on-site system meets specifications provided by Tyler.
- Assists with software installation as needed.

5.2.7.1 Newport Mesa USD GIS

- Participates in GIS planning activities.
- Responsible for management and maintenance of Newport Mesa USD GIS infrastructure and data.
- Ensures GIS data/service endpoints are in alignment with Tyler software requirements.
- Provides Tyler implementation team with GIS data/service access information.

5.2.7.2 Newport Mesa USD Upgrade Coordination

- Becomes familiar with the software upgrade process and required steps.
- Becomes familiar with Tyler's releases and updates.
- Utilizes Tyler resources to stay abreast of the latest Tyler releases and updates, as well as the latest helpful tools to manage the Newport Mesa USD's software upgrade process.
- Assists with the software upgrade process during implementation.
- Manages software upgrade activities post-implementation.
- Manages software upgrade plan activities.
- Coordinates software upgrade plan activities with Newport Mesa USD and Tyler resources.
- Communicates changes affecting users and department stakeholders.



- Obtains department stakeholder acceptance to upgrade production environment.

5.2.8 Newport Mesa USD Change Management Lead

- Validates that users receive timely and thorough communication regarding process changes.
- Provides coaching to supervisors to prepare them to support users through the project changes.
- Identifies the impact areas resulting from project activities and develops a plan to address them proactively.
- Identifies areas of resistance and develops a plan to reinforce the change.
- Monitors post-production performance and new process adherence.



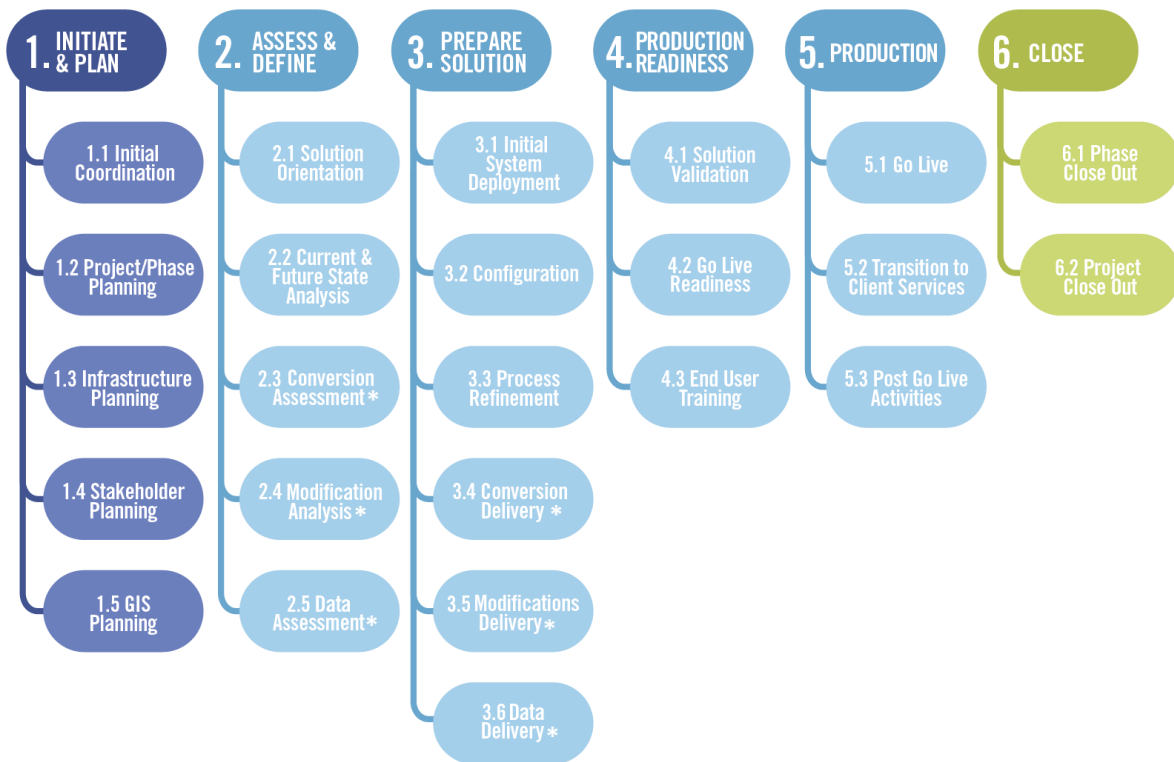
Part 3: Project Plan

6. Project Stages

Work Breakdown Structure

The Work Breakdown Structure (WBS) is a hierarchical representation of a Project or Phase broken down into smaller, more manageable components. The top-level components are called “Stages” and the second level components are called “Work Packages”. The work packages, shown below each stage, contain the high-level work to be done. The detailed Project Schedule, developed during Project/Phase Planning and finalized during subsequent stages, lists the tasks to be completed within each work package. Each stage ends with a “Control Point”, confirming the work performed during that stage of the Project has been accepted by the Newport Mesa USD.

Work Breakdown Structure (WBS)



**Items noted with an asterisk in the graphic above relate to specific products and services. If those products and services are not included in the scope of the contract, these specific work packages will be noted as “Intentionally Left Blank” in Section 6 of the Statement of Work.*



6.1 Initiate and Plan

The Initiate and Plan stage involves Project initiation, infrastructure, and planning. This stage creates a foundation for the Project by identifying and establishing sequence and timing for each Phase as well as verifying scope for the Project. This stage will be conducted at the onset of the Project, with a few unique items being repeated for the additional Phases as needed.

6.1.1 Initial Coordination

Prior to Project commencement, Tyler management assigns project manager(s). Additional Project resources will be assigned later in the Project as a Project schedule is developed. Tyler provides the Newport Mesa USD with initial Project documents used to gather names of key personnel, their functional role as it pertains to the Project, as well as any blackout dates to consider for future planning. the Newport Mesa USD gathers the information requested by the provided deadline ensuring preliminary planning and scheduling can be conducted moving the Project forward in a timely fashion. Internally, the Tyler Project Manager(s) coordinate with sales to ensure transfer of vital information from the sales process prior to scheduling a Project Planning Meeting with the Newport Mesa USD's team. During this step, Tyler will work with the Newport Mesa USD to establish the date(s) for the Project and Phase Planning session.

Objectives:

- Formally launch the project.
- Establish project governance.
- Define and communicate governance for Tyler.
- Identify Newport Mesa USD project team.

STAGE 1	Initial Coordination																
	Tyler								Newport Mesa USD								
RACI MATRIX KEY: R = Responsible A = Accountable C = Consulted I = Informed	Executive Manager	Implementation Manager	Project Manager	Implementation Consultant	Data Experts	Modification Services	Technical Services	Client Services	Executive Sponsor	Steering Committee	Project Manager	Functional Leads	Change Management Leads	Subject Matter Experts (Power	Department Heads	End Users	Technical Leads
Tyler project team is assigned	A	R	C	I	I	I	I		I		I						
Newport Mesa USDproject team is assigned									A	I	R	I	I	I			
Provide initial project documents to the Newport Mesa USD		A	R	C			C		I		I						
Gather preliminary information requested			I						A		R	C		C		C	C
Sales to implementation knowledge transfer		A	R	I	I	I	I				I						



RACI MATRIX KEY: R = Responsible A = Accountable C = Consulted I = Informed	Executive Manager	Implementation Manager	Project Manager	Implementation Consultant	Data Experts	Modification Services	Technical Services	Client Services	Executive Sponsor	Steering Committee	Project Manager	Functional Leads	Change Management Leads	Subject Matter Experts (Power Users)	Department Heads	End Users	Technical Leads
Schedule and conduct planning session(s)		A	R						I		C	C	I				
Develop Project Management Plan		A	R						I		C	C	I				
Develop initial project schedule		A	R	I	I	I	I		I	I	C	C	I	I	C		I

Inputs	Contract documents
	Statement of Work
	Guide to Starting Your Project

Outputs / Deliverables		Acceptance Criteria [only] for Deliverables
	Project Management Plan	Delivery of document
	Project Operational Plan	Delivery of document
	Initial Project Schedule	Newport Mesa USD provides acceptance of schedule based on resource availability, project budget, and goals.

Work package assumptions:

- Newport Mesa USD has reviewed and completed the Guide to Starting Your Project document.

6.1.3 Infrastructure Planning

Procuring required hardware and setting it up properly is a critical part of a successful implementation. This task is especially important for Tyler-hosted/SaaS deployment models. Tyler will be responsible for building the environments for a hosted/SaaS deployment, unless otherwise identified in the Agreement. Tyler will install Licensed Software on application server(s) or train the Newport Mesa USD to install License Software. The Newport Mesa USD is responsible for the installation and setup of all peripheral devices.

Objectives:

- Ensure the Newport Mesa USD's infrastructure meets Tyler's application requirements.
- Ensure the Newport Mesa USD's infrastructure is scheduled to be in place and available for use on time.

STAGE 1	Infrastructure Planning
---------	-------------------------



	Tyler							Newport Mesa USD									
RACI MATRIX KEY: R = Responsible A = Accountable C = Consulted I = Informed	Executive Manager	Implementation Manager	Project Manager	Implementation Consultant	Data Experts	Modification Services	Technical Services	Client Services	Executive Sponsor	Steering Committee	Project Manager	Functional Leads	Change Management Leads	Subject Matter Experts	Department Heads	End Users	Technical Leads
Provide Infrastructure Requirements and Design Document		A	R		C		C				I						I
Initial Infrastructure Meeting		A	R		C		C				C						C
*Schedule SaaS Environment Availability		A	R				C				I						
*Schedule Hardware to be Available for Installation			I				I		A		R						C
Schedule Installation of All Licensed Software		A	R				C				I						I
Infrastructure Audit		A	R				C				I						C

Inputs	1. Initial Infrastructure Requirements and Design Document
--------	--

Outputs / Deliverables		Acceptance Criteria [only] for Deliverables
	1. Completed Infrastructure Requirements and Design Document	Delivery of Document
	2. Infrastructure Audit	System Passes Audit Criteria

6.1.4 Stakeholder Meeting

Communication of the Project planning outcomes to the Newport Mesa USD Project team, executives and other key stakeholders is vital to Project success. The Stakeholder meeting is a strategic activity to inform, engage, gain commitment, and instill confidence in the Newport Mesa USD team. During the meeting, the goals and objectives of the Project will be reviewed along with detail on Project scope, implementation methodology, roles and responsibilities, Project timeline and schedule, and keys to Project success.

Objectives:

- Formally present and communicate the project activities and timeline.
- Communicate project expectations.

STAGE 1	Stakeholder Meeting	
	Tyler	Newport Mesa USD



RACI MATRIX KEY: R = Responsible A = Accountable C = Consulted I = Informed	Executive Manager	Implementation Manager	Project Manager	Implementation Consultant	Data Experts	Modification Services	Technical Services	Client Services	Executive Sponsor	Steering Committee	Project Manager	Functional Leads	Change Management Leads	Subject Matter Experts (Power	Department Heads	End Users	Technical Leads
Create Stakeholder Meeting Presentation	I	A	R	I	I				I	I	C		I				
Review Stakeholder Meeting Presentation		I	C						A		R		C				
Perform Stakeholder Meeting Presentation	I	A	R	I	I				I	I	C	I	I	I	I	I	I

Inputs	Agreement
	SOW
	Project Management Plan

Outputs / Deliverables		Acceptance Criteria [only] for Deliverables
	Stakeholder Meeting Presentation	

Work package assumptions:

- None

6.1.5 GIS Preparation

GIS data is a core part of many Tyler applications. Other Newport Mesa USD offices/products may also use this data and have different GIS requirements. A key focus of this preparation will be the process for developing the GIS data for use with Tyler applications. This can be an iterative process, so it is important to begin preparation early.

Objectives:

- Identify all Newport Mesa USD GIS data sources and formats.
- Tyler to understand the Newport Mesa USD's GIS needs and practices.
- Ensure the Newport Mesa USD's GIS data meets Tyler product requirements.

STAGE 1	GIS Preparation	
	Tyler	Newport Mesa USD



RACI MATRIX KEY: R = Responsible A = Accountable C = Consulted I = Informed	Executive Manager	Implementation Manager	Project Manager	Implementation Consultant	Data Experts	Modification Services	Technical Services	Client Services	Executive Sponsor	Steering Committee	Project Manager	Functional Leads	Change Management Leads	Subject Matter Experts (Power)	Department Heads	End Users	Technical Leads
Initial GIS Planning Meeting		A	R				C				C						C
Determine all GIS Data Sources			I				I		A		R						C
Provide Source GIS Data			I				I		A		R						C
Review GIS Data and Provide Feedback		A	R				C				I						C

Inputs	GIS Requirements Document
--------	---------------------------

Outputs / Deliverables		Acceptance Criteria [only] for Deliverables
	Production Ready Map Data	Meets Tyler GIS Requirements.

Work package assumptions:

- GIS data provided to Tyler is accurate and complete.
- GIS data provided to Tyler is current.
- Newport Mesa USD is responsible for maintaining the GIS data.

6.1.6 Control Point 1: Initiate & Plan Stage Acceptance

Acceptance criteria for this stage includes completion of all criteria listed below.

Note: Advancement to the Assess & Define stage is not dependent upon Tyler's receipt of this stage acceptance.

Initiate & Plan Stage Deliverables:

- Project Management Plan
- Initial Project Schedule

Initiate & Plan stage acceptance criteria:

- All stage deliverables accepted based on acceptance criteria previously defined
- Project governance defined
- Project portal made available to the Newport Mesa USD
- Stakeholder meeting complete
- GIS Data Production Ready
- Completed Infrastructure Requirements and Design Document
- System Passes Infrastructure Audit (as applicable)



6.2 Assess & Define

The Assess & Define stage will provide an opportunity to gather information related to current Newport Mesa USD business processes. This information will be used to identify and define business processes utilized with Tyler software. The Newport Mesa USD collaborates with Tyler providing complete and accurate information to Tyler staff and assisting in analysis, understanding current workflows and business processes.

6.2.1 Solution Orientation

The Solution Orientation provides the Project stakeholders a high-level understanding of the solution functionality prior to beginning the current and future state analysis. The primary goal is to establish a foundation for upcoming conversations regarding the design and configuration of the solution.

Tyler utilizes a variety of tools for the Solution Orientation, focusing on Newport Mesa USD team knowledge transfer such as: eLearning, documentation, or walkthroughs. The Newport Mesa USD team will gain a better understanding of the major processes and focus on data flow, the connection between configuration options and outcome, integration, and terminology that may be unique to Tyler's solution.

Objectives:

- Provide a basic understanding of system functionality.
- Prepare the Newport Mesa USD for current and future state analysis.

STAGE 2	Solution Orientation														
	Tyler								Newport Mesa USD						
RACI MATRIX KEY: R = Responsible A = Accountable C = Consulted I = Informed	Executive Manager	Implementation Manager	Project Manager	Implementation Consultant	Data Experts	Modification Services	Technical Services	Client Services	Executive Sponsor	Steering Committee	Project Manager	Functional Leads	Change Management Leads	Subject Matter Experts (Power)	Department Heads
Provide pre-requisites			A	R							I	I		I	I
Complete pre-requisites											A	R		C	C
Conduct orientation			A	R							I	I		I	I

Inputs	Solution orientation materials
	Training Plan

6.2.2 Current & Future State Analysis

The Current & Future State Analysis provides the Project stakeholders and Tyler an understanding of process changes that will be achieved with the new system.

The Newport Mesa USD and Tyler will evaluate current state processes, options within the new software, pros and cons of each based on current or desired state and make decisions about the future state configuration and processing. This may occur before or within the same timeframe as the configuration work package. The



options within the new software will be limited to the scope of this implementation and will make use of standard Tyler functionality.

The Newport Mesa USD will adopt the existing Tyler solution wherever possible to avoid project schedule and quality risk from over customization of Tyler products. It is the Newport Mesa USD's responsibility to verify that in-scope requirements are being met throughout the implementation if functional requirements are defined as part of the contract. The following guidelines will be followed when evaluating if a modification to the product is required:

- A reasonable business process change is available.
- Functionality exists which satisfies the requirement.
- Configuration of the application satisfies the requirement.
- An in-scope modification satisfies the requirement.

Requirements that are not met will follow the agreed upon change control process and can have impacts on the project schedule, scope, budget, and resource availability.

STAGE 2	Current & Future State Analysis																
	Tyler								Newport Mesa USD								
RACI MATRIX KEY: R = Responsible A = Accountable C = Consulted I = Informed	Executive Manager	Implementation Manager	Project Manager	Implementation Consultant	Data Experts	Modification Services	Technical Services	Client Services	Executive Sponsor	Steering Committee	Project Manager	Functional Leads	Change Management Leads	Subject Matter Experts (Power	Department Heads	End Users	Technical Leads
Current State process review			A	R	I	I	I				C	C	C	C			C
Discuss future-state options			A	R	C	C	C				C	C	C	C			C
Make future-state decisions (non-COTS)			C	C	C	C	C				A	R	I	C			C
Document anticipated configuration options required to support future state			A	R	C	C	C				I	I	I	I			I

Inputs	Newport Mesa USD current state documentation
	Solution Orientation completion

Outputs / Deliverables		Acceptance Criteria [only] for Deliverables
	Documentation that describes future-state decisions and configuration options to support future-state decisions.	Delivery of document

Work package assumptions:



- Newport Mesa USD attendees possess sufficient knowledge and authority to make future state decisions.
- The Newport Mesa USD is responsible for any documentation of current state business processes.
- The Newport Mesa USD can effectively communicate current state processes.

6.2.3 Intentionally left blank.

6.2.4 Intentionally left blank.

6.2.5 Intentionally left blank.

6.2.6 Control Point 2: Assess & Define Stage Acceptance

Acceptance criteria for this Stage includes completion of all criteria listed below.

Note: Advancement to the Prepare Solution Stage is dependent upon Tyler's receipt of the Stage Acceptance.

Assess & Define Stage Deliverables:

- Documentation of future state decisions and configuration options to support future state decisions.
- Modification specification document.
- Assess & Define Stage Acceptance Criteria:
- All stage deliverables accepted based on criteria previously defined.
- Solution Orientation is delivered.

6.3 Prepare Solution

During the Prepare Solution stage, information gathered during the Initiate & Plan and Assess & Define stages will be used to install and configure the Tyler software solution. Software configuration will be validated by the Newport Mesa USD against future state decisions defined in previous stages and processes refined as needed to ensure business requirements are met.

6.3.1 Initial System Deployment

The timely availability of the Tyler Solution is important to a successful Project implementation. The success and timeliness of subsequent work packages are contingent upon the initial system deployment of Tyler Licensed Software on an approved network and infrastructure. Delays in executing this work package can affect the project schedule.

Objectives:

- All licensed software is installed and operational.
- The Newport Mesa USD can access the software.

STAGE 3	Initial System Deployment (Hosted/SaaS)*	
	Tyler	Newport Mesa USD



RACI MATRIX KEY: R = Responsible A = Accountable C = Consulted I = Informed	Executive Manager	Implementation Manager	Project Manager	Implementation Consultant	Data Experts	Modification Services	Technical Services	Client Services	Executive Sponsor	Steering Committee	Project Manager	Functional Leads	Change Management Leads	Subject Matter Experts (Power Users)	Department Heads	End Users	Technical Leads
Prepare hosted environment			A				R				I						C
Install Licensed Software with Initial Database on Server(s) for Included Environments			A				R				I						C
Install Licensed Software on Newport Mesa USD Devices (if applicable)			I				C				A						R
Tyler System Administration Training (if applicable)			A				R				I						C

Outputs / Deliverables		Acceptance Criteria [only] for Deliverables
	Licensed Software is Installed on the Server(s)	Software is accessible
	Licensed Software is Installed on Newport Mesa USD Devices (if applicable)	Software is accessible
	Installation Checklist/System Document	System Passes
	Infrastructure Design Document (C&J – If Applicable)	

Work package assumptions:

- The most current available version of the Tyler Licensed Software will be installed.
- The Newport Mesa USD will provide network access for Tyler modules, printers, and Internet access to all applicable Newport Mesa USD and Tyler Project staff.

6.3.2 Configuration

The purpose of Configuration is to prepare the software product for validation.

Tyler staff collaborates with the Newport Mesa USD to complete software configuration based on the outputs of the future state analysis performed during the Assess and Define Stage. The Newport Mesa USD collaborates with Tyler staff iteratively to validate software configuration.



Objectives:

- Software is ready for validation.
- Educate the Newport Mesa USD Power User how to configure and maintain software.
- Prepare standard interfaces for process validation (if applicable).

STAGE 3	Configuration																
	Tyler							Newport Mesa USD									
RACI MATRIX KEY: R = Responsible A = Accountable C = Consulted I = Informed	Executive Manager	Implementation Manager	Project Manager	Implementation Consultant	Data Experts	Modification Services	Technical Services	Client Services	Executive Sponsor	Steering Committee	Project Manager	Functional Leads	Change Management Leads	Subject Matter Experts (Power)	Department Heads	End Users	Technical Leads
Conduct configuration training			A	R							I	C		C			
Complete Tyler configuration tasks (where applicable)			A	R							I	I		I			
Complete Newport Mesa USD configuration tasks (where applicable)			I	C							A	R		C			
Standard interfaces configuration and training (if applicable)			A	R			C				I	C		C			C
Updates to Solution Validation testing plan			C	C							A	R		C			C

Inputs	Documentation that describes future state decisions and configuration options to support future state decisions.
--------	--

Outputs / Deliverables		Acceptance Criteria [only] for Deliverables
	Configured System	N/A

Work package assumptions:

- Tyler provides guidance for configuration options available within the Tyler software. The Newport Mesa USD is responsible for making decisions when multiple options are available.

6.3.3 Process Refinement

Tyler will educate the Newport Mesa USD users on how to execute processes in the system to prepare them for the validation of the software. The Newport Mesa USD collaborates with Tyler staff iteratively to validate software configuration options to support future state.



Objectives:

- Ensure that the Newport Mesa USD understands future state processes and how to execute the processes in the software.
- Refine each process to meet the business requirements.
- Validate standard interfaces, where applicable.
- Validate forms and reports, where applicable.

STAGE 3	Process Refinement																
	Tyler								Newport Mesa USD								
RACI MATRIX KEY: R = Responsible A = Accountable C = Consulted I = Informed	Executive Manager	Implementation Manager	Project Manager	Implementation Consultant	Data Experts	Modification Services	Technical Services	Client Services	Executive Sponsor	Steering Committee	Project Manager	Functional Leads	Change Management Leads	Subject Matter Experts (Power Users)	Department Heads	End Users	Technical Leads
Conduct process training			A	R							I	C	I	C			
Confirm process decisions			I	C						A	R	C	I	C			
Test configuration			I	C							A	R		C			
Refine configuration (Newport Mesa USD Responsible)			I	C							A	R		C			
Refine configuration (Tyler Responsible)			A	R							I	I		I			
Validate interface process and results			I	C			C				A	R		C			C
Update Newport Mesa USD-specific process documentation (if applicable)			I	C							A	R		C			
Updates to Solution Validation testing plan			C	C							A	R		C			C

Inputs	Initial Configuration
	Documentation that describes future state decisions and configuration options to support future state decisions.
	Solution validation test plan

Outputs / Deliverables		Acceptance Criteria [only] for Deliverables
	Updated solution validation test plan	



	Completed Newport Mesa USD-specific process documentation (completed by Newport Mesa USD)	
--	---	--

Work package assumptions:

- None

6.3.4 Intentionally left blank.

6.3.5 Intentionally left blank.

6.3.6 Intentionally left blank.

6.3.7 Control Point 3: Prepare Solution Stage Acceptance

Acceptance criteria for this Stage includes all criteria listed below in each Work Package.

Note: Advancement to the Production Readiness Stage is dependent upon Tyler's receipt of the Stage Acceptance.

Prepare Solution Stage Deliverables:

- Licensed software is installed.
- Installation checklist/system document.

Prepare Solution Stage Acceptance Criteria:

- All stage deliverables accepted based on criteria previously defined.
- Software is configured.
- Solution validation test plan has been reviewed and updated if needed.

6.4 Production Readiness

Activities in the Production Readiness stage will prepare the Newport Mesa USD team for go-live through solution validation, the development of a detailed go-live plan and end user training. A readiness assessment will be conducted with the Newport Mesa USD to review the status of the project and the organizations readiness for go-live.

6.4.1 Solution Validation

Solution Validation is the end-to-end software testing activity to ensure that the Newport Mesa USD verifies all aspects of the Project (hardware, configuration, business processes, etc.) are functioning properly, and validates that all features and functions per the contract have been deployed for system use.

Objectives:

- Validate that the solution performs as indicated in the solution validation plan.
- Ensure the Newport Mesa USD organization is ready to move forward with go-live and training (if applicable).



STAGE 4	Solution Validation																
	Tyler								Newport Mesa USD								
RACI MATRIX KEY: R = Responsible A = Accountable C = Consulted I = Informed	Executive Manager	Implementation Manager	Project Manager	Implementation Consultant	Data Experts	Modification Services	Technical Services	Client Services	Executive Sponsor	Steering Committee	Project Manager	Functional Leads	Change Management Leads	Subject Matter Experts (Power	Department Heads	End Users	Technical Leads
Update Solution Validation plan			A	R	C						C	C		C			
Update test scripts (as applicable)			C	C	C						A	R		C			
Perform testing			C	C	C						A	R		C			
Document issues from testing			C	C	C						A	R		C			
Perform required follow-up on issues			A	R	C						C	C		C			

Inputs	Solution Validation plan
	Completed work product from prior stages (configuration, business process, etc.)

Outputs / Deliverables		Acceptance Criteria [only] for Deliverables
	Solution Validation Report	Newport Mesa USD updates report with testing results

Work package assumptions:

- Designated testing environment has been established.
- Testing includes current phase activities or deliverables only.

6.4.2 Go-Live Readiness

Tyler and the Newport Mesa USD will ensure that all requirements defined in Project planning have been completed and the Go-Live event can occur, as planned. A go-live readiness assessment will be completed identifying risks or actions items to be addressed to ensure the Newport Mesa USD has considered its ability to successfully Go-Live. Issues and concerns will be discussed, and mitigation options documented. Tyler and the Newport Mesa USD will jointly agree to move forward with transition to production. Expectations for final preparation and critical dates for the weeks leading into and during the Go-Live week will be planned in detail and communicated to Project teams.

Objectives:

- Action plan for go-live established.
- Assess go-live readiness.
- Stakeholders informed of go-live activities.



STAGE 4	Go-Live Readiness																
	Tyler								Newport Mesa USD								
RACI MATRIX KEY: R = Responsible A = Accountable C = Consulted I = Informed	Executive Manager	Implementation Manager	Project Manager	Implementation Consultant	Data Experts	Modification Services	Technical Services	Client Services	Executive Sponsor	Steering Committee	Project Manager	Functional Leads	Change Management Leads	Subject Matter Experts (Power)	Department Heads	End Users	Technical Leads
Perform Readiness Assessment	I	A	R	C	C	I	C	I	I	I	I		I				I
Conduct Go-Live planning session		A	R	C							C	C	C	C	C		C
Order peripheral hardware (if applicable)			I							A	R						C
Confirm procedures for Go-Live issue reporting & resolution		A	R	I	I	I	I				C	C	I	I	I	I	I
Develop Go-Live checklist		A	R	C	C						C	C	I	C			C
Final system infrastructure review (where applicable)			A				R				C						C

Inputs	Future state decisions
	Go-live checklist

Outputs / Deliverables		Acceptance Criteria [only] for Deliverables
	Updated go-live checklist	Updated Action plan and Checklist for go-live delivered to the Newport Mesa USD

Work package assumptions:

- None

6.4.3 End User Training

End User Training is a critical part of any successful software implementation. Using a training plan previously reviewed and approved, the Project team will organize and initiate the training activities.

Tyler Led: Tyler provides training for all applicable users. One or multiple occurrences of each scheduled training or implementation topic will be covered.

Tyler will provide standard application documentation for the general use of the software. It is not Tyler's responsibility to develop Newport Mesa USD specific business process documentation. Newport Mesa USD-led training labs using Newport Mesa USD specific business process documentation if created by the Newport Mesa USD can be added to the regular training curriculum, enhancing the training experiences of the end users.



Objectives:

- End users are trained on how to use the software prior to go-live.
- The Newport Mesa USD is prepared for on-going training and support of the application.

STAGE 4	End User Training																
	Tyler								Newport Mesa USD								
RACI MATRIX KEY: R = Responsible A = Accountable C = Consulted I = Informed	Executive Manager	Implementation Manager	Project Manager	Implementation Consultant	Data Experts	Modification Services	Technical Services	Client Services	Executive Sponsor	Steering Committee	Project Manager	Functional Leads	Change Management Leads	Subject Matter Experts (Power	Department Heads	End Users	Technical Leads
Update training plan		A	R	C							C		I		C		
End User training (Tyler-led)		A	R	C							C	C	I	C	C	C	
Train-the-trainer		A	R	C							C	C	I	C			
End User training (Newport Mesa USD-led)			C	C							A	R	I	C	C	C	

Inputs	Training Plan
	List of End Users and their Roles / Job Duties
	Configured Tyler System

Outputs / Deliverables		Acceptance Criteria [only] for Deliverables
	End User Training	Newport Mesa USD signoff that training was delivered

Work package assumptions:

- The Newport Mesa USD project team will work with Tyler to jointly develop a training curriculum that identifies the size, makeup, and subject-area of each of the training classes.
- Tyler will work with the Newport Mesa USD as much as possible to provide end-user training in a manner that minimizes the impact to the daily operations of Newport Mesa USD departments.
- The Newport Mesa USD will be responsible for training new users after go-live (exception—previously planned or regular training offerings by Tyler).

6.4.4 Control Point 4: Production Readiness Stage Acceptance

Acceptance criteria for this stage includes all criteria listed below. Advancement to the Production stage is dependent upon Tyler's receipt of the stage acceptance.

Production Readiness stage deliverables:

- Solution Validation Report.



- Update go-live action plan and checklist.
- End user training.

Production Readiness stage acceptance criteria:

- All stage deliverables accepted based on criteria previously defined.
- Go-Live planning session conducted.

6.5 Production

Following end user training the production system will be fully enabled and made ready for daily operational use as of the scheduled date. Tyler and the Newport Mesa USD will follow the comprehensive action plan laid out during Go-Live Readiness to support go-live activities and minimize risk to the Project during go-live. Following go-live, Tyler will work with the Newport Mesa USD to verify that implementation work is concluded, post go-live activities are scheduled, and the transition to Client Services is complete for long-term operations and maintenance of the Tyler software.

6.5.1 Go-Live

Following the action plan for Go-Live, defined in the Production Readiness stage, the Newport Mesa USD and Tyler will complete work assigned to prepare for Go-Live.

Tyler staff collaborates with the Newport Mesa USD during Go-Live activities. The Newport Mesa USD transitions to Tyler software for day-to day business processing.

Some training topics are better addressed following Go-Live when additional data is available in the system or based on timing of applicable business processes and will be scheduled following Go-Live per the Project Schedule.

Objectives:

- Execute day to day processing in Tyler software.
- Newport Mesa USD data available in Production environment.

STAGE 5	Go-Live																
	Tyler								Newport Mesa USD								
RACI MATRIX KEY: R = Responsible A = Accountable C = Consulted I = Informed	Executive Manager	Implementation Manager	Project Manager	Implementation Consultant	Data Experts	Modification Services	Technical Services	Client Services	Executive Sponsor	Steering Committee	Project Manager	Functional Leads	Change Management Leads	Subject Matter Experts (Power	Department Heads	End Users	Technical Leads
Provide final source data extract, if applicable			C		C						A						R
Final source data pushed into production			A	C	R						I	C		C			C



environment, if applicable																		
Proof final converted data, if applicable			C	C	C						A	R		C				
Complete Go-Live activities as defined in the Go-Live action plan			C	C	C					A	R	C	I	C				
Provide Go-Live assistance			A	R	C	C		I			C	C	I	C		I	C	

Inputs	Comprehensive Action Plan for Go-Live
	Final source data (if applicable)

Outputs / Deliverables		Acceptance Criteria [only] for Deliverables
	Data is available in production environment	Newport Mesa USD confirms data is available in production environment

Work package assumptions:

- The Newport Mesa USD will complete activities documented in the action plan for Go-Live as scheduled.
- External stakeholders will be available to assist in supporting the interfaces associated with the Go-Live live process.
- The Newport Mesa USD business processes required for Go-Live are fully documented and tested.
- The Newport Mesa USD Project team and subject matter experts are the primary point of contact for the end users when reporting issues during Go-Live.
- The Newport Mesa USD Project Team and Power User's provide business process context to the end users during Go-Live.
- The Tyler Go-Live support team is available to consult with the Newport Mesa USD teams as necessary.
- The Tyler Go-Live support team provides standard functionality responses, which may not be tailored to the local business processes.

6.5.2 Transition to Client Services

This work package signals the conclusion of implementation activities for the Phase or Project with the exception of agreed-upon post Go-Live activities. The Tyler project manager(s) schedules a formal transition of the Newport Mesa USD onto the Tyler Client Services team, who provides the Newport Mesa USD with assistance following Go-Live, officially transitioning the Newport Mesa USD to operations and maintenance.

Objectives:

- Ensure no critical issues remain for the project teams to resolve.
- Confirm proper knowledge transfer to the Newport Mesa USD teams for key processes and subject areas.

STAGE 5	Transition to Client Services	
	Tyler	Newport Mesa USD



RACI MATRIX KEY: R = Responsible A = Accountable C = Consulted I = Informed	Executive Manager	Implementation Manager	Project Manager	Implementation Consultant	Data Experts	Modification Services	Technical Services	Client Services	Executive Sponsor	Steering Committee	Project Manager	Functional Leads	Change Management Leads	Subject Matter Experts (Power)	Department Heads	End Users	Technical Leads
Transfer Newport Mesa USD to Client Services and review issue reporting and resolution processes	I	I	A	I	I			R	I	I	C	C		C			
Review long term maintenance and continuous improvement			A					R			C	C		C			

Inputs	Open item/issues List
--------	-----------------------

Outputs / Deliverables		Acceptance Criteria [only] for Deliverables
	Client Services Support Document	

Work package assumptions:

- No material project issues remain without assignment and plan.

6.5.3 Post Go-Live Activities

Some implementation activities are provided post-production due to the timing of business processes, the requirement of actual production data to complete the activities, or the requirement of the system being used in a live production state.

Objectives:

- Schedule activities that are planned for after Go-Live.
- Ensure issues have been resolved or are planned for resolution before phase or project close.

STAGE 5	Post Go-Live Activities	
	Tyler	Newport Mesa USD



RACI MATRIX KEY: R = Responsible A = Accountable C = Consulted I = Informed	Executive Manager	Implementation Manager	Project Manager	Implementation Consultant	Data Experts	Modification Services	Technical Services	Client Services	Executive Sponsor	Steering Committee	Project Manager	Functional Leads	Change Management Leads	Subject Matter Experts (Power	Department Heads	End Users	Technical Leads
Schedule contracted activities that are planned for delivery after go-live		A	R	C	C	C	C	I			C	C	I	C			C
Determine resolution plan in preparation for phase or project close out		A	R	C	C	C		I			C	C	I	C			

Inputs	List of post Go-Live activities
--------	---------------------------------

Outputs / Deliverables		Acceptance Criteria [only] for Deliverables
	Updated issues log	

Work package assumptions:

- System is being used in a live production state.

6.5.4 Control Point 5: Production Stage Acceptance

Acceptance criteria for this Stage includes completion of all criteria listed below:

- Advancement to the Close stage is not dependent upon Tyler's receipt of this Stage Acceptance.
- Converted data is available in production environment.

Production Stage Acceptance Criteria:

- All stage deliverables accepted based on criteria previously defined.
- Go-Live activities defined in the Go-Live action plan completed.
- Client services support document is provided.

6.6 Close

The Close stage signifies full implementation of all products purchased and encompassed in the Phase or Project. The Newport Mesa USD transitions to the next cycle of their relationship with Tyler (next Phase of implementation or long-term relationship with Tyler Client Services).



6.6.1 Phase Closeout

This work package represents Phase completion and signals the conclusion of implementation activities for the Phase. The Tyler Client Services team will assume ongoing support of the Newport Mesa USD for systems implemented in the Phase.

Objectives:

- Agreement from Tyler and the Newport Mesa USD teams that activities within this phase are complete.

STAGE 6	Phase Close Out																
	Tyler								Newport Mesa USD								
RACI MATRIX KEY: R = Responsible A = Accountable C = Consulted I = Informed	Executive Manager	Implementation Manager	Project Manager	Implementation Consultant	Data Experts	Modification Services	Technical Services	Client Services	Executive Sponsor	Steering Committee	Project Manager	Functional Leads	Change Management Leads	Subject Matter Experts (Power	Department Heads	End Users	Technical Leads
Reconcile project budget and status of contract Deliverables	I	A	R						I	I	C						
Hold post phase review meeting		A	R	C	C	C	C				C	C	C	C			C
Release phase-dependent Tyler project resources	A	R	I								I						

Participants	Tyler	Newport Mesa USD
	Project Leadership	Project Manager
	Project Manager	Project Sponsor(s)
	Implementation Consultants	Functional Leads, Power Users, Technical Leads
	Technical Consultants (Conversion, Deployment, Development)	
	Client Services	

Inputs	Contract
	Statement of Work
	Project artifacts

Outputs / Deliverables		Acceptance Criteria [only] for Deliverables
	Final action plan (for outstanding items)	
	Reconciliation Report	
	Post Phase Review	



Work package assumptions:

- Tyler deliverables for the phase have been completed.

6.6.2 Project Closeout

Completion of this work package signifies final acceptance and formal closing of the Project.

At this time the Newport Mesa USD may choose to begin working with Client Services to look at continuous improvement Projects, building on the completed solution.

Objectives:

- Confirm no critical issues remain for the project teams to resolve.
- Determine proper knowledge transfer to the Newport Mesa USD teams for key processes and subject areas has occurred.
- Verify all deliverables included in the Agreement are delivered.

STAGE 6	Project Close Out																
	Tyler								Newport Mesa USD								
RACI MATRIX KEY: R = Responsible A = Accountable C = Consulted I = Informed	Executive Manager	Implementation Manager	Project Manager	Implementation Consultant	Data Experts	Modification Services	Technical Services	Client Services	Executive Sponsor	Steering Committee	Project Manager	Functional Leads	Change Management Leads	Subject Matter Experts (Power	Department Heads	End Users	Technical Leads
Conduct post project review		A	R	C	C	C	C				C	C	C	C			C
Deliver post project report to Newport Mesa USD and Tyler leadership	I	A	R						I	I	C						
Release Tyler project resources	A	R	I								I						

Inputs	Contract
	Statement of Work

Outputs / Deliverables		Acceptance Criteria [only] for Deliverables
	Post Project Report	Newport Mesa USD acceptance; Completed report indicating all project Deliverables and milestones have been completed

Work package assumptions:

- All project implementation activities have been completed and approved.



- No critical project issues remain that have not been documented and assigned.
- Final project budget has been reconciled and invoiced.
- All Tyler deliverables have been completed.

6.6.3 Control Point 6: Close Stage Acceptance

Acceptance criteria for this Stage includes completion of all criteria listed below.

Close Stage Deliverables:

- Post Project Report.

Close Stage Acceptance Criteria:

- Completed report indicating all Project deliverables and milestones have been completed.

7. General Assumptions

Tyler and the Newport Mesa USD will use this SOW as a guide for managing the implementation of the Tyler Project as provided and described in the Agreement. There are a few assumptions which, when acknowledged and adhered to, will support a successful implementation. Assumptions related to specific work packages are documented throughout the SOW. Included here are general assumptions which should be considered throughout the overall implementation process.

7.1 Project

- Project activities will begin after the Agreement has been fully executed.
- The Newport Mesa USD Project Team will complete their necessary assignments in a mutually agreed upon timeframe to meet the scheduled go-live date, as outlined in the Project Schedule.
- Sessions will be scheduled and conducted at a mutually agreeable time.
- Additional services, software modules and modifications not described in the SOW or Agreement will be considered a change to this Project and will require a Change Request Form as previously referenced in the definition of the Change Control Process.
- Tyler will provide a written agenda and notice of any prerequisites to the Newport Mesa USD project manager(s) ten (10) business days or as otherwise mutually agreed upon time frame prior to any scheduled on-site or remote sessions, as applicable.
- Tyler will provide guidance for configuration and processing options available within the Tyler software. If multiple options are presented by Tyler, the Newport Mesa USD is responsible for making decisions based on the options available.
- Implementation of new software may require changes to existing processes, both business and technical, requiring the Newport Mesa USD to make process changes.
- The Newport Mesa USD is responsible for defining, documenting, and implementing their policies that result from any business process changes.

7.2 Organizational Change Management

Unless otherwise contracted by Tyler, Newport Mesa USD is responsible for managing Organizational Change. Impacted Newport Mesa USD resources will need consistent coaching and reassurance from their leadership team to embrace and accept the changes being imposed by the move to new software. An important part of



change is ensuring that impacted Newport Mesa USD resources understand the value of the change, and why they are being asked to change.

7.3 Resources and Scheduling

- Newport Mesa USD resources will participate in scheduled activities as assigned in the Project Schedule.
- The Newport Mesa USD team will complete prerequisites prior to applicable scheduled activities. Failure to do so may affect the schedule.
- Tyler and the Newport Mesa USD will provide resources to support the efforts to complete the Project as scheduled and within the constraints of the Project budget.
- Abbreviated timelines and overlapped Phases require sufficient resources to complete all required work as scheduled.
- Changes to the Project Schedule, availability of resources or changes in Scope will be requested through a Change Request. Impacts to the triple constraints (scope, budget, and schedule) will be assessed and documented as part of the change control process.
- The Newport Mesa USD will ensure assigned resources will follow the change control process and possess the required business knowledge to complete their assigned tasks successfully. Should there be a change in resources, the replacement resource should have a comparable level of availability, change control process buy-in, and knowledge.
- The Newport Mesa USD makes timely Project related decisions to achieve scheduled due dates on tasks and prepare for subsequent training sessions. Failure to do so may affect the schedule, as each analysis and implementation session is dependent on the decisions made in prior sessions.
- The Newport Mesa USD will respond to information requests in a comprehensive and timely manner, in accordance with the Project Schedule.
- The Newport Mesa USD will provide adequate meeting space or facilities, including appropriate system connectivity, to the project teams including Tyler team members.
- For on-site visits, Tyler will identify a travel schedule that balances the needs of the project and the employee.

7.4 Intentionally left blank.

7.5 Facilities

- The Newport Mesa USD will provide dedicated space for Tyler staff to work with Newport Mesa USD resources for both on-site and remote sessions. If Phases overlap, Newport Mesa USD will provide multiple training facilities to allow for independent sessions scheduling without conflict.
- The Newport Mesa USD will provide staff with a location to practice what they have learned without distraction.



8. Glossary

Word or Term	Definition
Acceptance	Confirming that the output or deliverable is suitable and conforms to the agreed upon criteria.
Accountable	The one who ultimately ensures a task or deliverable is completed; the one who ensures the prerequisites of the task are met and who delegates the work to those responsible. [Also see RACI]
Application	A computer program designed to perform a group of coordinated functions, tasks, or activities for the benefit of the user.
Application Programming Interface (API)	A defined set of tools/methods to pass data to and received data from Tyler software products
Agreement	This executed legal contract that defines the products and services to be implemented or performed.
Business Process	The practices, policy, procedure, guidelines, or functionality that the client uses to complete a specific job function.
Business Requirements Document	A specification document used to describe Client requirements for contracted software modifications.
Change Request	A form used as part of the Change Control process whereby changes in the scope of work, timeline, resources, and/or budget are documented and agreed upon by participating parties.
Change Management	Guides how we prepare, equip and support individuals to successfully adopt change in order to drive organizational success & outcomes
Code Mapping [where applicable]	An activity that occurs during the data conversion process whereby users equate data (field level) values from the old system to the values available in the new system. These may be one to one or many to one. Example: Old System [Field = eye color] [values = BL, Blu, Blue] maps to New Tyler System [Field = Eye Color] [value = Blue].
Consulted	Those whose opinions are sought, typically subject matter experts, and with whom there is two-way communication. [Also see RACI]
Control Point	This activity occurs at the end of each stage and serves as a formal and intentional opportunity to review stage deliverables and required acceptance criteria for the stage have been met.
Data Mapping [where applicable]	The activity determining and documenting where data from the legacy system will be placed in the new system; this typically involves prior data analysis to understand how the data is currently used in the legacy system and how it will be used in the new system.
Deliverable	A verifiable document or service produced as part of the Project, as defined in the work packages.
Go-Live	The point in time when the Client is using the Tyler software to conduct daily operations in Production.
Informed	Those who are kept up-to-date on progress, often only on completion of the task or deliverable, and with whom there is just one-way communication. [Also see RACI]



Infrastructure	The composite hardware, network resources and services required for the existence, operation, and management of the Tyler software.
Interface	A connection to and potential exchange of data with an external system or application. Interfaces may be one way, with data leaving the Tyler system to another system or data entering Tyler from another system, or they may be bi-directional with data both leaving and entering Tyler and another system.
Integration	A standard exchange or sharing of common data within the Tyler system or between Tyler applications
Legacy System	The software from which a client is converting.
Modification	Custom enhancement of Tyler's existing software to provide features or functions to meet individual client requirements documented within the scope of the Agreement.
On-site	Indicates the work location is at one or more of the client's physical office or work environments.
Organizational Change	The process of changing an organization's strategies, processes, procedures, technologies, and culture, as well as the effect of such changes on the organization.
Output	A product, result or service generated by a process.
Peripheral devices	An auxiliary device that connects to and works with the computer in some way. Some examples: scanner, digital camera, printer.
Phase	A portion of the Project in which specific set of related applications are typically implemented. Phases each have an independent start, Go-Live and closure dates but use the same Implementation Plans as other Phases of the Project. Phases may overlap or be sequential and may have different Tyler resources assigned.
Project	The delivery of the software and services per the agreement and the Statement of Work. A Project may be broken down into multiple Phases.
RACI	A matrix describing the level of participation by various roles in completing tasks or Deliverables for a Project or process. Individuals or groups are assigned one and only one of the following roles for a given task: Responsible (R), Accountable (A), Consulted (C), or Informed (I).
Remote	Indicates the work location is at one or more of Tyler's physical offices or work environments.
Responsible	Those who ensure a task is completed, either by themselves or delegating to another resource. [Also see RACI]
Scope	Products and services that are included in the Agreement.



Solution	The implementation of the contracted software product(s) resulting in the connected system allowing users to meet Project goals and gain anticipated efficiencies.
Stage	The top-level components of the WBS. Each Stage is repeated for individual Phases of the Project.
Standard	Software functionality that is included in the base software (off-the-shelf) package; is not customized or modified.
Statement of Work (SOW)	Document which will provide supporting detail to the Agreement defining Project-specific activities, services, and Deliverables.
System	The collective group of software and hardware that is used by the organization to conduct business.
Test Scripts	The steps or sequence of steps that will be used to validate or confirm a piece of functionality, configuration, enhancement, or Use Case Scenario.
Training Plan	Document(s) that indicate how and when users of the system will be trained relevant to their role in the implementation or use of the system.
Validation (or to validate)	The process of testing and approving that a specific Deliverable, process, program, or product is working as expected.
Work Breakdown Structure (WBS)	A hierarchical representation of a Project or Phase broken down into smaller, more manageable components.
Work Package	A group of related tasks within a project.



Part 4: Appendices

9. No Conversion - Intentionally left blank.

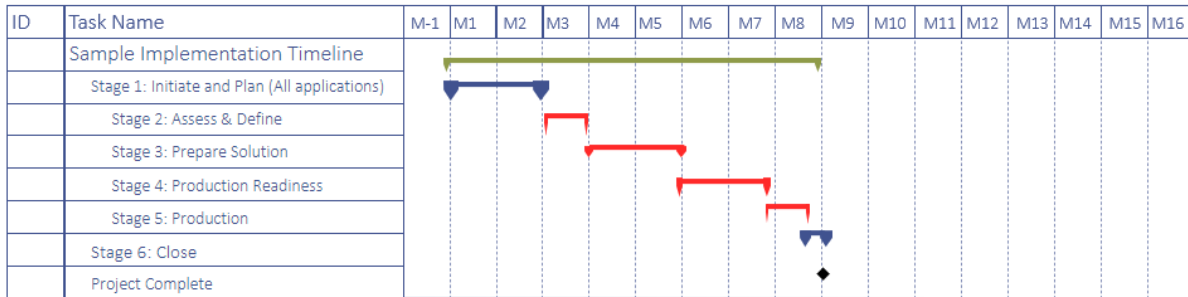


10. Additional Appendices



11. Project Timeline

11.1 Traversa Timeline



example

This timeline is an example. Please use it as a general guide...ONLY. Its purpose is to demonstrate the order in which various products are typically implemented and the potential overlap of stages for each phase. The exact timing of each deliverable depends on many factors including, but not limited to, the client's ability to commit resources to the project, client blackout dates, and the alignment of client business practices with Tyler implementation methodology. Tyler makes no guarantees that implementation schedules will align with this example.





Exhibit F
Transportation Solution Terms

REMAINDER OF PAGE INTENTIONALLY LEFT BLANK



Schedule 1

Tyler Drive Terms and Conditions

Hardware Terms and Conditions

1. Warranty. Tyler passes through any applicable third-party hardware or services warranties provided by the provider of such hardware or services.
2. Installation and Acceptance. Unless otherwise noted in the Investment Summary, the Tyler Software Product installation fee includes installation of the Hardware Products, provided, however, that additional charges for installation may be required in the event vehicles are not available for installation services when the installation personnel arrive at the client location. Upon completion of installation, Client will obtain from Tyler a certification of completion, or similar document, which will constitute Client's acceptance of the Hardware Products. Such acceptance will be final and conclusive except for latent defect, fraud, and a gross mistake as amount to fraud. In no event will Tyler be liable for any claims, losses, liabilities, damages, costs or expenses arising out of or in any way related to the installation of the tablet, including, but not limited to, where on the vehicle the tablet is installed. Client's use of the tablet will operate as acknowledgement of, and agreement with, the foregoing disclaimer of liability.
3. Disclaimer of Liability. In no event will Tyler be liable for any claims, losses, liabilities, damages, costs or expenses arising out of or in any way related to the operation of the vehicle on which the tablet is installed. Client's installation and use of such tablet will operate as acknowledgement of, and agreement with, the foregoing disclaimer of liability.
4. Disclaimer for Installation of Tablet. In no event will Tyler be liable for any claims, losses, liabilities, damages, costs or expenses arising out of or in any way related to the installation of the tablet, including, but not limited to, where on the vehicle the Tyler Drive tablet is installed. Your use of the tablet will operate as your acknowledgement of, and agreement with, the foregoing disclaimer of liability.
5. Site Requirements. Client shall provide a suitable environment, location and space for the installation and operation of the Hardware Products.

Tyler Drive Embedded Software Terms and Conditions

1. Client's use of the third party software included on Third Party Hardware (for the purpose of this Agreement, "Embedded Third Party Software") is restricted to executable code.
2. Client is prohibited from (i) transferring the Embedded Third Party Software except for temporary CPU transfer in the event of computer malfunction; (ii) assigning, time-sharing, lending, leasing, or renting the Embedded Third Party Software or using for commercial network services or interactive cable or remote processing services.



3. Title to the Embedded Third Party Software shall not pass to Client or any other party.
4. Client is prohibited from reverse engineering, disassembling, or decompiling the Embedded Third Party Software and duplicating the Embedded Third Party Software except for a single archival copy. Reasonable Client backup copies are permitted.
5. To the extent permitted by applicable law, the software developer's and its licensors' liability for any damages or loss of any kind, whether direct, special, indirect, incidental, or consequential, arising from the use of the Embedded Third Party Software including, but not limited to, liability for use of Embedded Third Party Software in high-risk activities or liability related to any Data supplied by the software developer.
6. Client, at the time of termination of its Embedded Third Party Software license, is required to certify in writing to Tyler that Client has discontinued use and has destroyed or will return to Tyler all copies of the Embedded Third Party Software and Documentation.
7. Client is required to comply fully with all relevant export laws and regulations of the United States to ensure that Embedded Third Party Software, or any direct product thereof, is not exported, directly or indirectly, in violation of United States law.
8. Client is prohibited from removing or obscuring any software developer copyright, trademark notice, or restrictive legend.
9. All terms in the software developer click-through License Agreement (E204 and E300) included with Embedded Third Party Software are disclaimed. This Amendment is the sole agreement governing Client's use of the Embedded Third Party Software. Any warranty offered by Tyler on the Tyler Software Products shall only apply between Tyler and its client(s). The software developer does not offer any warranties or indemnities to Client for the Embedded Third Party Software.
10. Tyler may terminate Client's license in the event Client uses the Embedded Third Party Software separately from the Tyler Software Products, and require Client to acquire a Full Use Software license directly from the software developer to permit any further use of Embedded Third Party Software.
11. ANY THIRD PARTY SOFTWARE, PROGRAM MATERIALS, PREPRODUCTION MATERIALS, CONFIDENTIAL INFORMATION, OR TRADE SECRETS ARE PROVIDED "AS IS" WITHOUT WARRANTY OF ANY KIND. THE SOFTWARE DEVELOPER DISCLAIMS ALL OTHER WARRANTIES OF ANY KIND, EITHER EXPRESS OR IMPLIED, INCLUDING, BUT NOT LIMITED TO, THE IMPLIED WARRANTIES OF MERCHANTABILITY, FITNESS FOR A PARTICULAR PURPOSE, SYSTEM INTEGRATION, AND NONINFRINGEMENT OF INTELLECTUAL PROPERTY RIGHTS.
12. Tyler is prohibited from providing Client with updated versions of the Embedded Third Party Software in Tyler Software Products.

Tyler Drive Wireless Service Terms and Conditions

1. Under no circumstances shall wireless provider be responsible for or obligated to make any changes to its equipment, operations, network or systems to accommodate Client.
2. A mobile telephone number may be changed, reassigned or eliminated upon reasonable notice to Client under certain circumstances, including fraud prevention, area code changes, and regulatory or statutory law enforcement requirements.
3. All equipment activated on a wireless service line at a fixed location must be located by Client within the areas served by the wireless provider owned and operated network.
4. When a Client's wireless service line is terminated, Client shall cooperate with Tyler and the wireless provider to ensure that the equipment that was activated on that line does not register or attempt to register on the wireless provider's network.
5. WIRELESS PROVIDER AND ITS AFFILIATES AND CONTRACTORS MAKE NO WARRANTIES WHATSOEVER,

- DIRECTLY OR INDIRECTLY, EXPRESS OR IMPLIED, AS TO THE SUITABILITY, DURABILITY, FITNESS FOR USE, QUALITY, PERFORMANCE OR NON-INFRINGEMENT OF THE WIRELESS SERVICE OR EQUIPMENT OR THEIR USE IN CONNECTION WITH THE TYLER PROVIDED EQUIPMENT OR THE TYLER PRODUCT OR SERVICE. THE EQUIPMENT IS PROVIDED "AS IS." EQUIPMENT PURCHASED UNDER THIS AGREEMENT SHALL BE SUBJECT TO ANY WARRANTIES PROVIDED TO TYLER BY THE EQUIPMENT MANUFACTURER.
6. WIRELESS PROVIDER AND ITS AFFILIATES AND CONTRACTORS WILL HAVE NO LIABILITY TO CLIENT:
 - A) IF CHANGES IN THE WIRELESS SERVICE OR IN THE WIRELESS PROVIDER NETWORK, SYSTEMS, OPERATIONS, EQUIPMENT, POLICIES OR PROCEDURES RENDER OBSOLETE OR OUTDATED ANY EQUIPMENT, HARDWARE, DEVICES OR SOFTWARE PROVIDED BY TYLER TO CLIENT IN CONJUNCTION WITH ITS USE OF THE TYLER PRODUCT OR SERVICE;
 - B) FOR ANY CAUSES OF ACTION, LOSSES OR DAMAGES OF ANY KIND WHATSOEVER ARISING OUT OF (I) MISTAKES, OMISSIONS, INTERRUPTIONS, ERRORS, OR DEFECTS IN FURNISHING WIRELESS SERVICE, (II) FAILURES OR DEFECTS IN THE WIRELESS PROVIDER NETWORK OR SYSTEMS, (III) USE OF THE TYLER PRODUCT OR SERVICE OR TYLER'S EQUIPMENT, OR (IV) DISABLING OF EQUIPMENT.
 - C) FOR ANY INJURY TO PERSONS OR PROPERTY, LOSSES (INCLUDING ANY LOSS OF BUSINESS), DAMAGES, CLAIMS OR DEMANDS OF ANY KIND OR NATURE, INCLUDING, BUT NOT LIMITED TO, USE OR INABILITY TO USE THE WIRELESS SERVICE OR EQUIPMENT, RELIANCE BY CLIENT ON ANY DATA PROVIDED OR OBTAINED THROUGH USE OF THE WIRELESS SERVICE OR EQUIPMENT, ANY INTERRUPTION, DEFECT, ERROR, VIRUS, OR DELAY IN OPERATION OR TRANSMISSION, ANY FAILURE TO TRANSMIT OR ANY LOSS OF DATA ARISING OUT OF OR IN CONNECTION WITH THIS AGREEMENT. IN NO EVENT SHALL WIRELESS PROVIDER OR ITS VENDORS BE LIABLE FOR LOSSES, DAMAGES, CLAIMS OR EXPENSES OF ANY KIND ARISING OUT OF THE USE OR ATTEMPTED USE OF, OR THE INABILITY TO ACCESS, LIFE SUPPORT OR MONITORING SYSTEMS OR DEVICES, 911 OR E911, OR OTHER EMERGENCY NUMBERS OR SERVICES.
 7. IN NO EVENT SHALL WIRELESS PROVIDER, ITS AFFILIATES AND CONTRACTORS BE LIABLE TO END USER, OR ANY OF ITS EMPLOYEES OR AGENTS, OR ANY THIRD PARTY, FOR ANY INDIRECT, INCIDENTAL, SPECIAL, CONSEQUENTIAL OR PUNITIVE DAMAGES.
 8. CLIENT EXPRESSLY UNDERSTANDS AND AGREES THAT IT HAS NO CONTRACTUAL RELATIONSHIP WHATSOEVER WITH THE UNDERLYING WIRELESS SERVICE PROVIDER OR ITS AFFILIATES OR CONTRACTORS AND THAT CLIENT IS NOT A THIRD PARTY BENEFICIARY OF ANY AGREEMENT BETWEEN CLIENT AND THE UNDERLYING CARRIER. IN ADDITION, CLIENT ACKNOWLEDGES AND AGREES THAT THE UNDERLYING CARRIER AND ITS AFFILIATES AND CONTRACTORS SHALL HAVE NO LEGAL, EQUITABLE, OR OTHER LIABILITY OF ANY KIND TO CLIENT AND CLIENT HEREBY WAIVES ANY AND ALL CLAIMS OR DEMANDS THEREFOR.
 9. Wireless service uses radio technologies and is subject to transmission and service area limitations, interruptions and dropped calls caused by atmospheric, topographical or environmental conditions, cell site availability, equipment or its installation, governmental regulations, system limitations, maintenance or other conditions or activities affecting wireless service operation. Wireless service and/or features may not be available in all areas. Wireless service is only available within each applicable calling plan coverage area, within the operating range of the wireless systems, and with equipment that is authorized to operate on wireless provider's network.
 10. Due to regulatory requirements regarding wireless provider's network licenses, Client shall obtain wireless provider's prior approval and written agreement before it may install, deploy or use any regeneration equipment or similar mechanism (for example, a repeater) to originate, amplify, enhance, retransmit or regenerate wireless service. Wireless provider may terminate lines and, upon legal notice, may terminate this Agreement and pursue any other available remedies if Client violates this section.
 11. In order to protect the wireless provider's network, operations and other customers, wireless provider

may suspend or terminate service to affected lines if Client uses the wireless service or equipment: (a) in an illegal or unauthorized manner (including “spamming” or other abusive messaging); (b) in a manner prohibited by the applicable plan, option, feature or application; or (c) in a manner that has an adverse impact on wireless provider’s network, operations or customers. If Client continues using the wireless service in such a manner, wireless provider may deny activation to new wireless service lines or, upon legal notice, may terminate this Agreement.



Exhibit F
Schedule 2
Professional Hardware Installation Terms

The Investment Summary contains hardware installation services for the quoted number of vehicles.

Additional costs may apply to include both tech-day (see below) rates and travel expenses for unscheduled, unanticipated after hours or weekend installations, or expedited installations requested by Client.

Additional labor and/or parts charges may be required for non-standard vehicles, or installations outside the approved scope of work.

Listed prices do not cover extenuating circumstances beyond the control of Tyler (or Tyler's 3rd Party installer) that lengthen or delay the installation time. If additional time is required due to, but not limited to, any of the following, additional charges may apply: Inadequate lighting; non-covered space in poor weather conditions; power outages; dangerous work environment, etc.

If multiple vehicles are located at one site for installation, the Client shall make enough vehicles available for a technician to fill up one day of work (this will vary based on auxiliary connections, etc.). If Client chooses to not make all vehicles available and the installer must make two or more trips when one trip would have been sufficient to complete installation on all vehicles, then additional tech-day rates (plus travel expenses) may apply for such subsequent trips.

We warrant that the hardware installation services shall be performed in a professional, competent, and workmanlike manner. In the event a breach of this warranty is detected within one (1) year of installation, we shall re-perform such services at no additional cost to you. This warranty shall be void in the event you alter or modify the hardware installation settings in any manner.

Tyler (or Tyler's 3rd Party installer) will identify additional costs required in advance, and such costs shall only be incurred if approved by Client. Client acknowledges that a delay in providing such approval may negatively impact the timeliness of the provision of services.

During installation, Client will have personnel available to move vehicles if necessary.



Exhibit F
Schedule 3

**Return Merchandise Authorization Process & Termination of GPS & Tyler Drive
Hardware Units**

1. **TERMINATED UNITS.** Client is responsible for reporting terminated units to end their maintenance agreement on said unit(s). Client will continue to be billed until Tyler is notified of such termination. To notify Tyler, the Client must submit a completed GPS termination form, as shown attached, including the exact serial number(s) of the unit(s) being terminated, to our accounting department so invoices can be adjusted to reflect the termination. The date used to calculate the termination and any associated credits will be the date that Tyler's accounting department receives the completed notification.
2. **LIMITED WARRANTY ON PRO PLUS.** The "Warranty Period" means either: (a) the one (1) year period commencing on the activation date for the device; or (b) the lifetime of the device, provided that the device is activated on certain rate plans (currently the ProPlus rate plan and any other applicable rate plan as announced by us from time to time ("Limited Lifetime Warranty")). Provided you properly complete and we receive from you, a justified written warranty claim and, if applicable, all affected devices (returned at your expense), prior to the expiration of the Warranty Period, we will either repair or replace such device. We reserve the right to replace any device and software with a more current version or model or refurbished device units in our sole discretion. We also reserve the right to charge you return shipping and a reasonable service fee if we determine that your warranty claim was not justified. Additionally, for claims under the Limited Lifetime Warranty we will replace the device in accordance with the process specified above if the network on which the device operates no longer provides adequate coverage in your usage area (as determined by us in our sole discretion). To the maximum extent permitted by applicable law, the foregoing constitutes your sole and exclusive remedy and our sole and exclusive obligation for any breach of the foregoing warranty.
3. **CONDITIONS AND EXCLUSIONS.** Warranty claims must be submitted promptly after the date when you noticed the defect. In order to make a warranty claim, you may be required to prove that the installation did not cause the defect, unless the installation was performed by a Geotab-certified installer. Any products, services or items made or supplied by third parties (including vehicles tracked with our units) are not covered by this process, and we are not responsible for malfunctions by, in, or caused by such products, services, or items.



Empowering people who serve the public®

Tyler GPS Termination Form

Client Name:

Please list all serial numbers that you are requesting to have terminated, along with your reason for termination:

Serial Number	Reason for Termination

Note: All listed units will be terminated upon receipt of this signed document. Additional charges will apply for reactivation of a terminated unit. Hardware Maintenance for terminated units will be adjusted for the renewal following the request for termination. Partial credit/refund of annual fees paid is not available.

Signature:

Printed Name and Title:

Date:





AFFIDAVIT - Please sign and return to cancel products

In regards to the following listed product(s):

Support for GPS and related products

Customer acknowledges that it no longer will receive software updates, "bug fixes", services or telephone support for the listed products.

Customer acknowledges that, if it decides to later utilize the listed products, it must either pay for the products at then-current pricing or remit payment for support fees that would have been due if the products had remained in continual use.

Note: I understand that I am terminating the selected device(s) whereby they will no longer function in any capacity. I also understand that, for purchased devices, if I wish to reuse these terminated device in the future, I will have to return the device(s) to Geotab for reactivation, from which additional charges may incur.

Authorized Representative

Printed Name and Title

Date

Please return this form via email to: AR@tylertech.com or by Fax: 806-797-4849



Exhibit F Schedule 4 HERE End User Terms

Your receipt and use of the HERE data, if required, is subject to the following terms and conditions:

Use of Data. Your use of the HERE data is restricted to your own use for use with the Tyler Software. You are prohibited from using the HERE data with geographic data from competitors of HERE.

Reverse Engineering and Archiving. You are prohibited from reverse engineering or Archiving the HERE data.

Export. You are prohibited from exporting the HERE data (or derivative thereof) except in compliance with applicable export laws, rules and regulations.

Cessation of Use. You will be required to cease using the HERE data if you fail to comply with the terms and conditions herein.

Regulatory and Third-Party Supplier Restrictions and Obligations. The applicable regulatory and third-party supplier restrictions and obligations (including copyright notices) are available for review at <https://legal.here.com/en-gb/terms/general-content-supplier-terms-and-notice>.

Commercial Item. The HERE data is a “commercial item”, as that term is defined at 48 C.F.R. ("FAR") 2.101, and is licensed in accordance with the terms and conditions herein.

Disclaimer of Warranties. Any warranties, express or implied of quality, performance, merchantability, fitness for a particular purpose and non-infringement are hereby disclaimed. Tyler does not make or imply any warranties on behalf of HERE or its data suppliers.

Disclaimer of Liability. Liability is hereby disclaimed for any claim, demand or action, irrespective of the nature of the cause of the claim, demand or action arising out of the use or possession of the HERE data; or for any loss of profit, revenue, contracts or savings, or any other direct, indirect, incidental, special or consequential damages arising out of the use of, or inability to use the HERE data, any defect or inaccuracy in the HERE data, or the breach of these terms or conditions, whether in an action in contract or tort or based on a warranty, even if Tyler, HERE or their suppliers have been advised of the possibility of such damages. Tyler does not provide any right of liability or indemnity against HERE or its data suppliers.

© 1987 - 2018 HERE – All rights reserved





Exhibit F
Schedule 5
Geotab Equipment Warranty

GEOTAB warrants that during the Warranty Period each Product (including beta products obtained through the GEOTAB beta program, but excluding other test or demonstration products or product versions) will perform in accordance with the written specifications that GEOTAB issues with respect to such Product, subject to the limitations and conditions set forth in GEOTAB's specifications and this Agreement, when used in accordance with GEOTAB's documentation and specifications. "Warranty Period" means either: (a) the one-year period commencing on the activation date; or (b) the lifetime of the device, provided that the device is activated on certain rate plans (currently the ProPlus rate plan and any other rate plan as announced by GEOTAB from time to time ("Limited Lifetime Warranty")). Provided Client properly completes and GEOTAB receives from Client, directly or through an authorized reseller, a justified written warranty claim and, if applicable, all affected devices (returned at Client's expense to the reseller from whom Client purchased the devices or as otherwise specified by GEOTAB), prior to the expiration of the Warranty Period, GEOTAB will either repair or replace such device or use commercially reasonable efforts to correct any material defects in software and services. GEOTAB reserves the right to replace any device and software with a more current version or model or refurbished device units in GEOTAB's sole discretion. GEOTAB also reserves the right to charge Client return shipping and a reasonable service fee if GEOTAB determines that Client's warranty claim was not justified. The remaining Warranty Period for any purchased Products GEOTAB repairs or replaces under warranty is deemed to be the greater of: (aa) the actual remaining Warranty Period for the replaced or repaired Product; and (bb) 90 days following the completion of such repair or replacement. Additionally, under the Limited Lifetime Warranty GEOTAB will replace the device in accordance with the process specified above if the network on which the device operates no longer provides adequate coverage in Client's usage area (as determined by GEOTAB in GEOTAB's discretion). To the maximum extent permitted by applicable law, the foregoing constitutes Client's sole and exclusive remedy and GEOTAB's sole and exclusive obligation for any breach of the foregoing warranty.

Warranty claims must be submitted promptly after the date when Client noticed the defect. In order to make a warranty claim, Client may be required to prove that the installation did not cause the defects or failures of the Product, unless the installation was performed by a GEOTAB -certified installer. Any products, services or items made or supplied by third parties (including vehicles tracked with our Products) are not covered by our limited warranty and GEOTAB is not responsible for malfunctions by or in such products, services or items. Client may need to purchase, license or procure products, software, data or services from third parties to enable the full use or functionality of GEOTAB's Products. Client is responsible for ensuring that all such third party products, software, data or services meet GEOTAB's minimum requirements, including without limitation, processing speed, memory, client software, internet access, internet or other communication channel bandwidth.

EXCEPT AS EXPRESSLY SET FORTH IN THIS AGREEMENT, TO THE MAXIMUM EXTENT PERMITTED BY APPLICABLE LAW, GEOTAB DISCLAIMS ALL REPRESENTATIONS, WARRANTIES AND CONDITIONS,



EXPRESS OR IMPLIED, INCLUDING WITHOUT LIMITATION ANY TERMS, REPRESENTATIONS, WARRANTIES OR CONDITIONS OF MERCHANTABILITY, DURABILITY, FITNESS FOR A PARTICULAR PURPOSE, NON-INFRINGEMENT, TITLE, QUIET ENJOYMENT OR QUIET POSSESSION AND THOSE ARISING BY STATUTE OR IN LAW, OR FROM A COURSE OF DEALING OR USAGE OF TRADE. WITHOUT LIMITING THE GENERALITY OF THE FOREGOING, GEOTAB CANNOT AND DOES NOT REPRESENT, WARRANT OR COVENANT THAT: (A) ANY OF THE PRODUCTS WILL MEET CLIENT'S BUSINESS OR OTHER REQUIREMENTS; (B) THE PRODUCTS WILL OPERATE OR BE PROVIDED WITHOUT INTERRUPTION; (C) THE PRODUCTS WILL BE ERROR-FREE, VIRUS-FREE OR THAT THE RESULTS OBTAINED FROM THEIR USE WILL BE ACCURATE, RELIABLE OR CURRENT (D) ANY ERRORS IN THE PRODUCTS CAN BE CORRECTED OR FOUND IN ORDER TO BE CORRECTED. MOREOVER, GEOTAB DOES NOT ENDORSE, AND MAKES NO REPRESENTATION, OR WARRANTY WITH RESPECT TO, AND ASSUMES NO RESPONSIBILITY, OBLIGATION OR LIABILITY FOR, ANY NON-GEOTAB PRODUCTS, SOFTWARE, DATA OR SERVICES INCLUDING BUT NOT LIMITED TO WIRELESS SERVICES, MAPPING SERVICES, POSTED ROAD SPEED SERVICES, INTERNET BANDWIDTH AND CLOUD STORAGE.

NOTWITHSTANDING ANY OTHER PROVISION IN THIS AGREEMENT, TO THE MAXIMUM EXTENT PERMITTED BY APPLICABLE LAW, IN NO EVENT WILL EITHER PARTY BE LIABLE FOR ANY SPECIAL, INCIDENTAL, INDIRECT, OR CONSEQUENTIAL LOSSES OR DAMAGES, INCLUDING LOSS OF REVENUE OR PROFITS, LOSS OF DATA, BUSINESS INFORMATION OR LOSS OF USE THEREOF, FAILURE TO REALIZE EXPECTED PROFITS OR SAVINGS, COST OF CAPITAL, LOSS OF BUSINESS OPPORTUNITIES, LOSS OF GOODWILL OR ANY OTHER NON-DIRECT, PECUNIARY, COMMERCIAL OR ECONOMIC LOSS OR DAMAGE OF ANY KIND WHETHER FORESEEN OR UNFORESEEN ARISING FROM OR INCIDENTAL TO THIS AGREEMENT. FOR GREATER CERTAINTY, THE FOREGOING LIMITATIONS AND EXCLUSIONS OF LIABILITY SHALL NOT APPLY TO (A) EITHER PARTY'S INDEMNIFICATION OBLIGATIONS HEREUNDER; OR (B) INFRINGEMENT OR MISAPPROPRIATION OF THE OTHER PARTY'S INTELLECTUAL PROPERTY RIGHTS.

GEOTAB makes no representation nor provides any warranty with respect to third party software. Third party software not manufactured by GEOTAB is limited, in warranty and guarantee, to the warranty and/or guarantee of the supplier and expires upon the expiration of such warranty. GEOTAB will not be responsible for updating or fixing any errors or inconsistencies in the third party software.

It is understood that GEOTAB has no special knowledge of Client's operation or requirements and Client confirms and agrees that the GEOTAB Equipment are purchased because of the independent determination by Client of its suitability for intended use.

In the event Client discontinues support services on Client's GPS devices and subsequently desires to reinstate such services, Client will be required to repurchase the GPS devices at the then-current rate.